

Fluorescent Wiring Options



Suspended, Wall, Cove

1 cct.

120V, 277V or 347V

All luminaires are pre-wired to ends with quick-wire connectors.

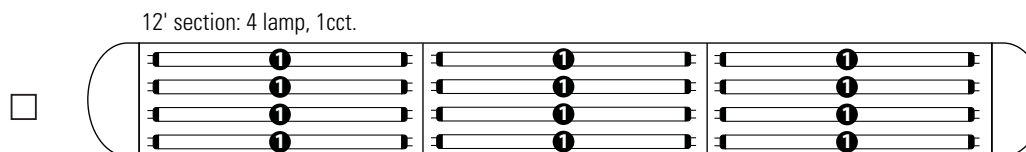
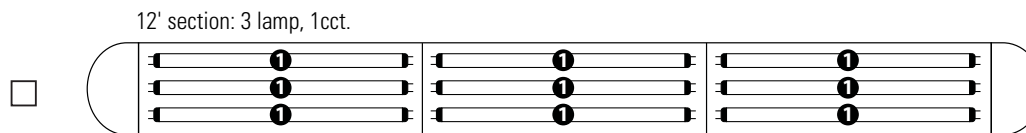
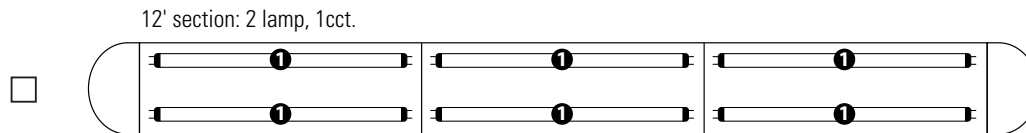
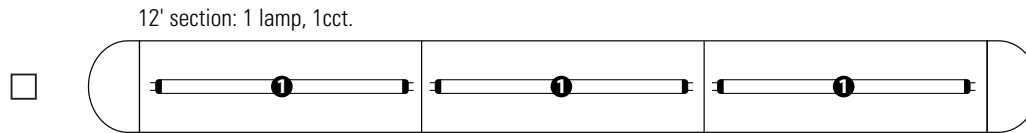
Each circuit has its own neutral conductor supplied. All circuits are clearly labeled at each end.

All wiring options can be ordered with 1 or 2 circuit thru wiring to fixture ends.

Dimming can be supplied for most fixtures.

1 Circuit

All lamps wired on one circuit.



Fluorescent Wiring Options



Suspended, Wall, Cove

1 cct.

120V, 277V or 347V

All luminaires are pre-wired to ends with quick-wire connectors.

Each circuit has its own neutral conductor supplied. All circuits are clearly labeled at each end.

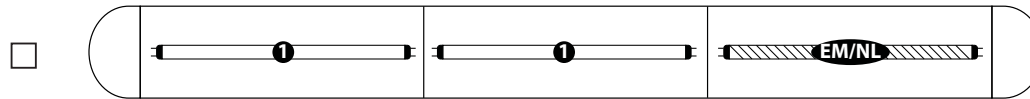
All wiring options can be ordered with 1 or 2 circuit thru wiring to fixture ends.

Dimming can be supplied for most fixtures.

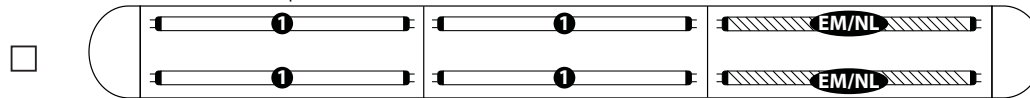
1 Circuit with Emergency / Night Light (EM/NL)

One 4ft module in a one circuit fixture to be wired on a separate circuit. All lamps in EM/NL module to be wired together. Leads for normal circuit wired to both fixture ends. Leads for EM/NL circuit exit at EM/NL section only.

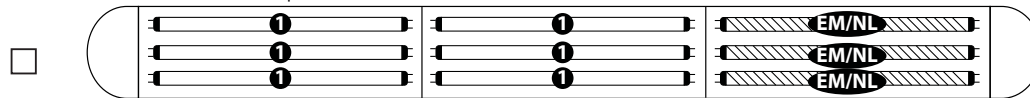
12' section: 1 lamp, 1cct. with EM/NL



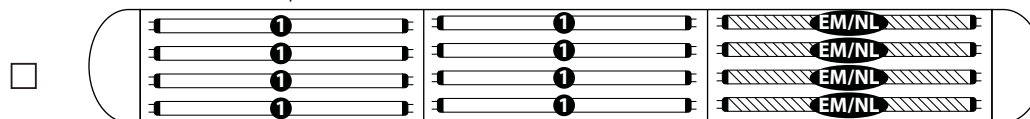
12' section: 2 lamp, 1cct. with EM/NL



12' section: 3 lamp, 1cct. with EM/NL



12' section: 4 lamp, 1cct. with EM/NL



Fluorescent Wiring Options



Suspended, Wall, Cove

1 cct.

120V, 277V or 347V

All luminaires are pre-wired to ends with quick-wire connectors.

Each circuit has its own neutral conductor supplied. All circuits are clearly labeled at each end.

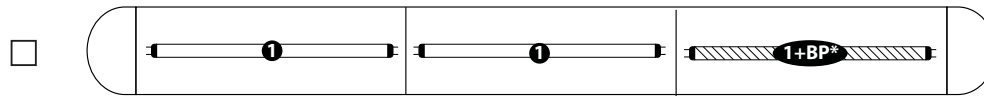
All wiring options can be ordered with 1 or 2 circuit thru wiring to fixture ends.

Dimming can be supplied for most fixtures.

1 Circuit with Battery Pack*

All lamps wired on one circuit, plus a battery pack is wired to one lamp. A hot lead is connected to the battery pack and would function as a "trigger" wire when connected to a constant hot by installer. Leads for both normal circuit and battery pack are wired to fixture ends.

12' section: 1 lamp, 1cct. with Battery Pack



* Multi-lamp battery packs are also available upon request.

12' section: 2 lamp, 1cct. with Battery Pack



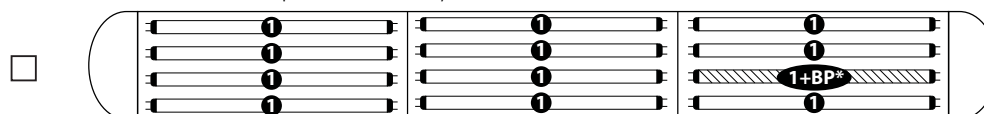
* Multi-lamp battery packs are also available upon request.

12' section: 3 lamp, 1cct. with Battery Pack



* Multi-lamp battery packs are also available upon request.

12' section: 4 lamp, 1cct. with Battery Pack



* Multi-lamp battery packs are also available upon request.

Fluorescent Wiring Options



Suspended, Wall, Cove

1 cct.

120V, 277V or 347V

All luminaires are pre-wired to ends with quick-wire connectors.

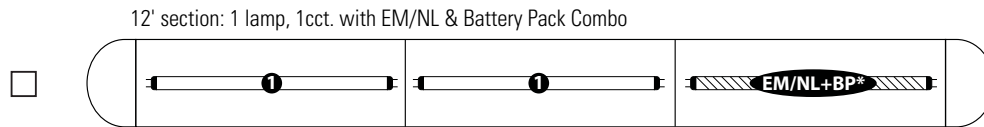
Each circuit has its own neutral conductor supplied. All circuits are clearly labeled at each end.

All wiring options can be ordered with 1 or 2 circuit thru wiring to fixture ends.

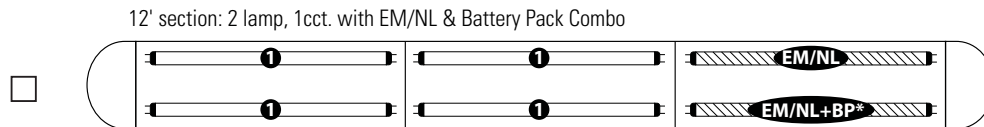
Dimming can be supplied for most fixtures.

1 Circuit with Emergency / Night Light (EM/NL) & Battery Pack Combo*

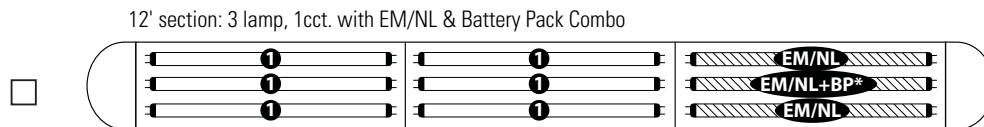
One 4ft module in a one circuit fixture to be wired on a separate circuit, in addition, a battery pack is wired to one lamp. Installer can connect "trigger" wire to EM hot lead if controlled together or wire separately if controlled independently. All lamps in EM/NL module to be wired together. Leads for normal circuit wired to both fixture ends. Leads for EM/NL circuit exit at EM/NL section only.



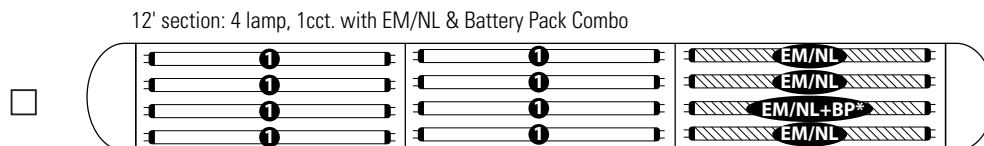
*Multi-lamp battery packs available upon request



*Multi-lamp battery packs available upon request



*Multi-lamp battery packs available upon request



*Multi-lamp battery packs available upon request

Fluorescent Wiring Options



Suspended, Wall, Cove

2cct.

120V, 277V or 347V

All luminaires are pre-wired to ends with quick-wire connectors.

Each circuit has its own neutral conductor supplied. All circuits are clearly labeled at each end.

All wiring options can be ordered with 1 or 2 circuit thru wiring to fixture ends.

Dimming can be supplied for most fixtures.

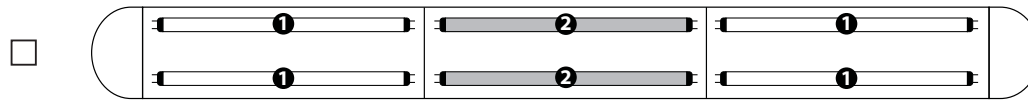
2 Circuit A/B Switching (module to module)

Fixture wired for two circuits. Lamps wired in alternating 4ft modules.

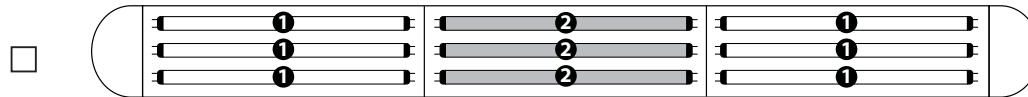
12' section: 1 lamp, 2cct. with A/B switching (module to module)



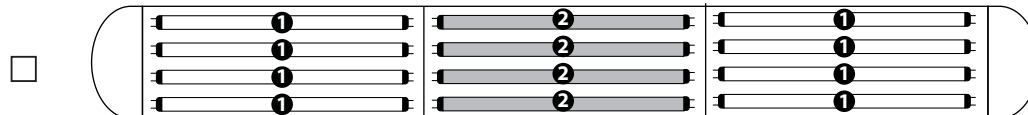
12' section: 2 lamp, 2cct. with A/B switching (module to module)



12' section: 3 lamp, 2cct. with A/B switching (module to module)



12' section: 4 lamp, 2cct. with A/B switching (module to module)



Fluorescent Wiring Options



Suspended, Wall, Cove
2cct.
120V, 277V or 347V

All luminaires are pre-wired to ends with quick-wire connectors.

Each circuit has its own neutral conductor supplied. All circuits are clearly labeled at each end.

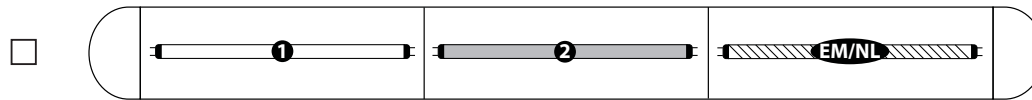
All wiring options can be ordered with 1 or 2 circuit thru wiring to fixture ends.

Dimming can be supplied for most fixtures.

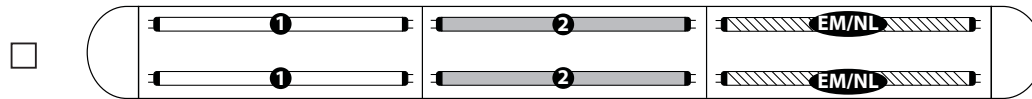
2 Circuit A/B Switching (module to module) with Emergency / Night Light (EM/NL)

One 4ft module in a two circuit fixture (A/B switching) to be wired on a separate circuit. All lamps in EM/NL module to be wired together. Leads for normal circuit wired to both fixture ends. Leads for EM/NL circuit exit at EM/NL section only.

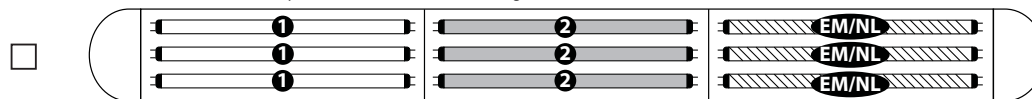
12' section: 1 lamp, 2cct. with A/B switching (module to module) & EM/NL



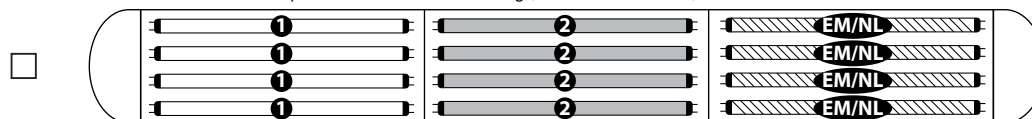
12' section: 2 lamp, 2cct. with A/B switching (module to module) & EM/NL



12' section: 3 lamp, 2cct. with A/B switching (module to module) & EM/NL



12' section: 4 lamp, 2cct. with A/B switching (module to module) & EM/NL



Fluorescent Wiring Options



Suspended, Wall, Cove
2cct.
120V, 277V or 347V

All luminaires are pre-wired to ends with quick-wire connectors.

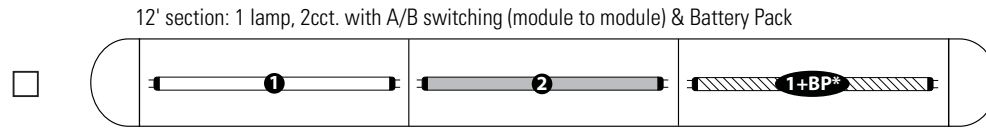
Each circuit has its own neutral conductor supplied. All circuits are clearly labeled at each end.

All wiring options can be ordered with 1 or 2 circuit thru wiring to fixture ends.

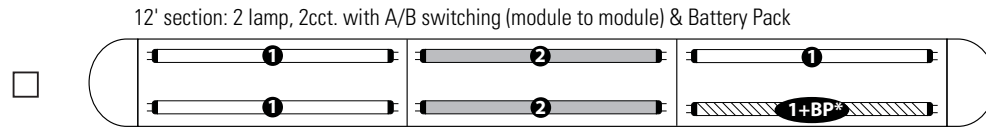
Dimming can be supplied for most fixtures.

2 Circuit A/B Switching (module to module) with Battery Pack*

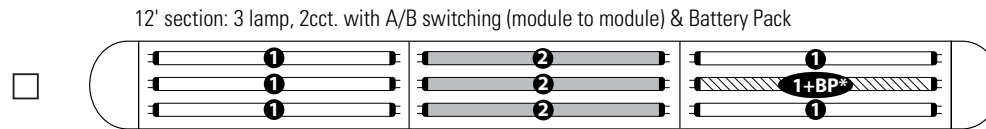
Fixture wired for two circuits (A/B switching), plus a battery pack is wired to one lamp. A hot lead is connected to the battery pack and would function as a "trigger" wire when connected to a constant hot by installer. Leads for both normal circuits and battery pack are wired to fixture ends.



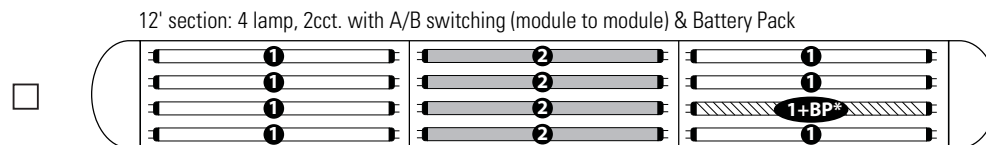
* Multi-lamp battery packs are available upon request



* Multi-lamp battery packs are available upon request



* Multi-lamp battery packs are available upon request



* Multi-lamp battery packs are available upon request

Fluorescent Wiring Options



Suspended, Wall, Cove
 2cct.
 120V, 277V or 347V

All luminaires are pre-wired to ends with quick-wire connectors.

Each circuit has its own neutral conductor supplied. All circuits are clearly labeled at each end.

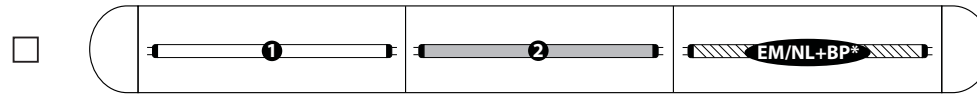
All wiring options can be ordered with 1 or 2 circuit thru wiring to fixture ends.

Dimming can be supplied for most fixtures.

2 Circuit A/B Switching (module to module) with Emergency / Night Light (EM/NL) & Battery Pack Combo*

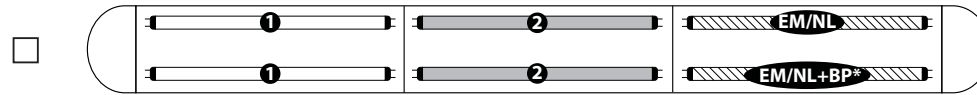
One 4ft module in a two circuit fixture (A/B switching) to be wired on a separate circuit. In addition, battery pack is wired to one lamp. Installer can connect "trigger" wire to EM hot lead if controlled together, or wired separately if controlled independently. Leads for both normal circuits and battery pack wired to fixture ends. Leads for EM/NL circuit exit at EM/NL section only.

12' section: 1 lamp, 2cct. A/B switching (module to module) with EM/NL & Battery Pack Combo



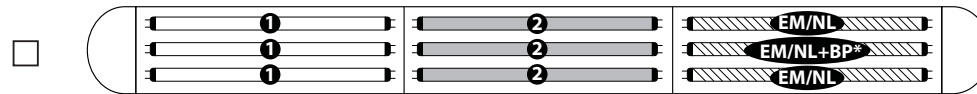
*Multi-lamp battery packs are available upon request

12' section: 2 lamp, 2cct. A/B switching (module to module) with EM/NL & Battery Pack Combo



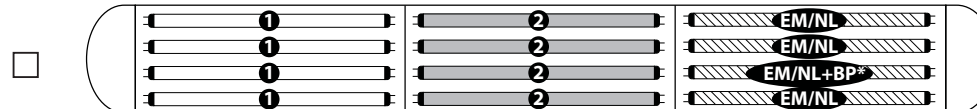
*Multi-lamp battery packs are available upon request

12' section: 3 lamp, 2cct. A/B switching (module to module) with EM/NL & Battery Pack Combo



*Multi-lamp battery packs are available upon request

12' section: 4 lamp, 2cct. A/B switching (module to module) with EM/NL & Battery Pack Combo



*Multi-lamp battery packs are available upon request

Fluorescent Wiring Options



Suspended, Wall, Cove

2cct.

120V, 277V or 347V

All luminaires are pre-wired to ends with quick-wire connectors.

Each circuit has its own neutral conductor supplied. All circuits are clearly labeled at each end.

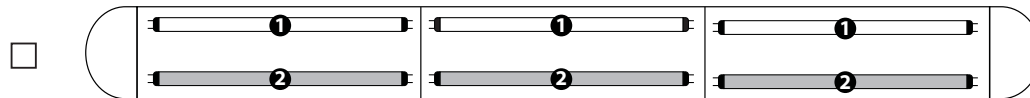
All wiring options can be ordered with 1 or 2 circuit thru wiring to fixture ends.

Dimming can be supplied for most fixtures.

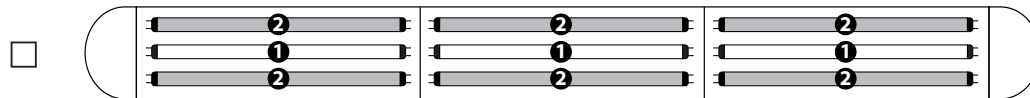
2 Circuit Left/Right (L/R) or Center/Outer (C/O) Switching

Fixture wired for two circuits. Lamps wired left/right in a 2 lamp cross-section and center/outer in a 3 or 4 lamp cross-section fixture.

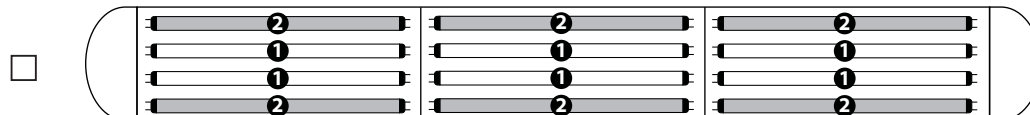
12' section: 2 lamp, 2cct. with L/R switching (left/right)



12' section: 3 lamp, 2cct. with C/O switching (center/outer)



12' section: 4 lamp, 2cct. with C/O switching (center/outer)



Fluorescent Wiring Options



Suspended, Wall, Cove
2cct.
 120V, 277V or 347V

All luminaires are pre-wired to ends with quick-wire connectors.

Each circuit has its own neutral conductor supplied. All circuits are clearly labeled at each end.

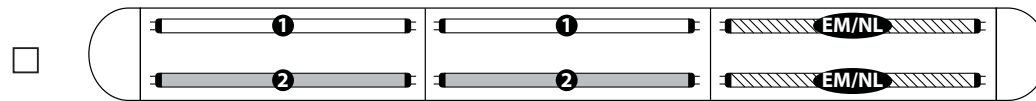
All wiring options can be ordered with 1 or 2 circuit thru wiring to fixture ends.

Dimming can be supplied for most fixtures.

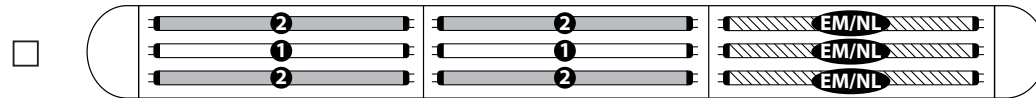
2 Circuit Left/Right (L/R) or Center/Outer (C/O) Switching with Emergency / Night Light (EM/NL)

One 4ft module in a two circuit fixture (left/right switching) to be wired on a separate circuit. All lamps in EM/NL module to be wired together. Leads for normal circuit wired to both fixture ends. Leads for EM/NL circuit exit at EM/NL section only.

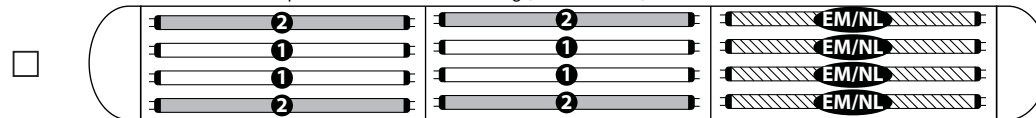
12' section: 2 lamp, 2cct. with L/R switching (left/right) & EM/NL



12' section: 3 lamp, 2cct. with C/O switching (center/outer) & EM/NL



12' section: 4 lamp, 2cct. with C/O switching (center/outer) & EM/NL



Fluorescent Wiring Options



Suspended, Wall, Cove

2cct.

120V, 277V or 347V

All luminaires are pre-wired to ends with quick-wire connectors.

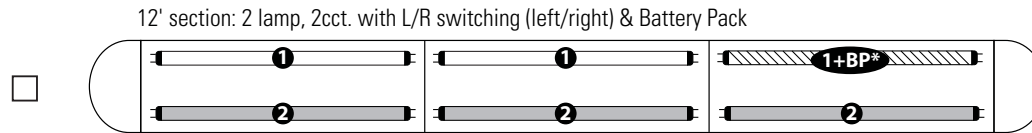
Each circuit has its own neutral conductor supplied. All circuits are clearly labeled at each end.

All wiring options can be ordered with 1 or 2 circuit thru wiring to fixture ends.

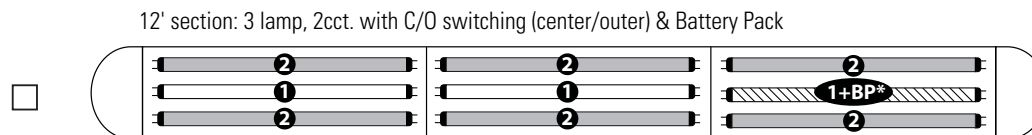
Dimming can be supplied for most fixtures.

2 Circuit Left/Right (L/R) or Center/Outer (C/O) Switching with Battery Pack*

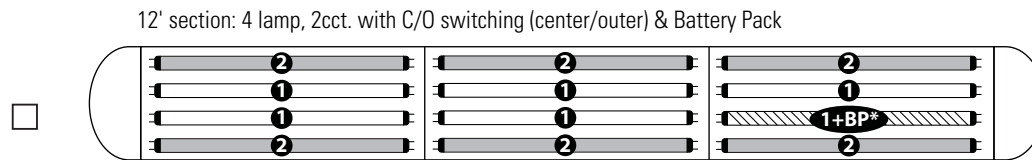
Fixture wired for two circuits (left/right or center/outer switching), plus a battery pack is wired to one lamp. A hot lead is connected to the battery pack and would act as a "trigger" wire when connected to a constant hot by installer. Leads for both normal circuits and battery pack are wired to fixture ends.



*Multi-lamp battery packs are available upon request



*Multi-lamp battery packs are available upon request



*Multi-lamp battery packs are available upon request

Fluorescent Wiring Options



Suspended, Wall, Cove
 2cct.
 120V, 277V or 347V

All luminaires are pre-wired to ends with quick-wire connectors.

Each circuit has its own neutral conductor supplied. All circuits are clearly labeled at each end.

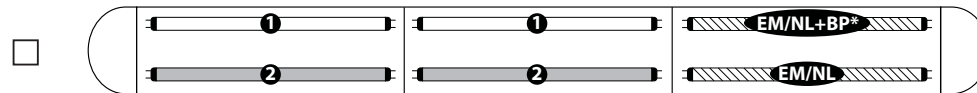
All wiring options can be ordered with 1 or 2 circuit thru wiring to fixture ends.

Dimming can be supplied for most fixtures.

2 Circuit Left/Right (L/R) or Center/Outer (C/O) Switching with Emergency / Night Light (EM/NL) & Battery Pack Combo*

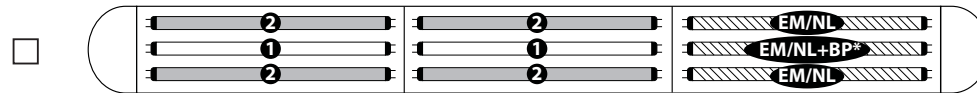
One 4ft module in a two circuit fixture (left/right switching) to be wired on a separate circuit, in addition, a battery pack is wired to one lamp. Installer can connect "trigger" wire to EM hot lead if controlled together or wired separately if controlled independently. All lamps in EM/NL module to be wired together. Leads for normal circuit wired to both fixture ends. Leads for EM/NL circuit exit at EM/NL section only.

12' section: 2 lamp, 2cct. L/R switching (left/right) with EM/NL & Battery Pack Combo



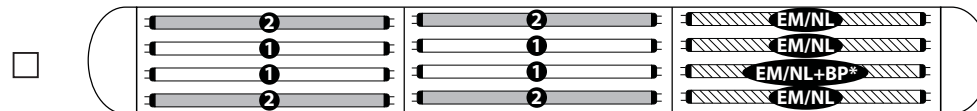
*Multi-lamp battery packs are available upon request

12' section: 3 lamp, 2cct. C/O switching (center/outer) with EM/NL & Battery Pack Combo



*Multi-lamp battery packs are available upon request

12' section: 4 lamp, 2cct. C/O switching (center/outer) with EM/NL & Battery Pack Combo



*Multi-lamp battery packs are available upon request

Fluorescent Wiring Options



Suspended
Power Feeds / Connections
120V, 277V or 347V

All luminaires are pre-wired to ends with quick-wire connectors or typical plugs.

Each circuit has its own neutral conductor supplied. All circuits are clearly labeled at each end.

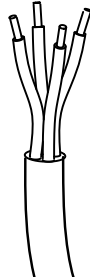
All wiring options can be ordered with 1 or 2 circuit thru wiring to fixture ends.

All power cord jackets are factory pre-stripped.

Power Cords (for aircraft cable)

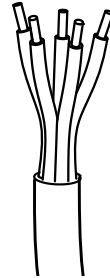
4 Conductor

- Max. 10 amps in a 1 circuit application
- Max. 5 amps per circuit in a 2 circuit application
- Max. 600V
- Good for 2 circuit feeds or a 1 circuit feed with a battery pack hot lead
- 120V, 277V or 347V applications



5 Conductor

- Max. 10 amps in a 1 circuit application
- Max. 5 amps per circuit in a 2 circuit application
- Max. 600V
- Good for 1 circuit feed with dimming or 2 circuit feeds
- 120V, 277V or 347V applications



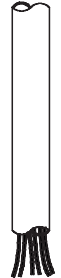
7 Conductor

- Max. 10 amps in a 1 circuit application
- Max. 5 amps per circuit in a 2 circuit application
- Max. 600V
- Good for 3 circuit feeds or 2 circuit feeds with a battery pack hot lead
- 120V, 277V or 347V applications



Pendant Pipe

- Max. 3 circuits 14 gauge wire (supplied by others)
- **Not available for all products. Please consult factory for availability.**



Electrical Connections (standard with all products)

Quick-wire connectors

- Installed at one end of each fixture

