

Exceptional lighting performance from any angle

VERGE SUSPENDED LED

DIRECT/INDIRECT, MESOOPTICS LENS
CRI >80 3500K, 3400 lm/4ft

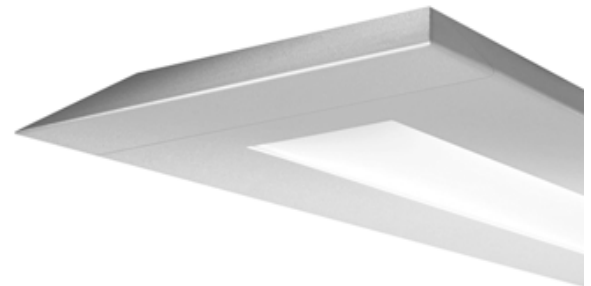
Project:

Spec Type:

Catalog No: 7606LBEQN

Qty

Line Notes:



Ordering guide

Product Type	Source	Color Temp *	Lumens *	Lower Optics	Upper Optics	Run Length	Wiring †	Voltage	Driver	Finish
<input type="text" value="7606"/>	<input type="text" value="L"/>	<input type="text" value="B"/>	<input type="text" value="E"/>	<input type="text" value="Q"/>	<input type="text" value="N"/>	<input type="text"/>	<input type="text"/>	<input type="text"/>	<input type="text"/>	<input type="text"/>
Verge Direct/ Indirect	L LED	A 4000K B 3500K C 3000K	C 4800 lm/4ft E 3400 lm/4ft	Q MesoOptics Lens	N None G 80% Down Kit J 100% Down Kit	04 4' 08 8' XX Total run length (4' increments)	1 1 cct 3 1 cct w/ EM cct 7 1 cct w/ Dimming 8 1 cct w/ TVV B 2 cct A/B	1 120V 2 277V	E Standard	W Standard White T Titanium Silver B Black X Custom

* Nominal values within a range. Consult ies file for exact color temp and lumens † Consult website for complete list of standard wiring options

Mounting Hardware

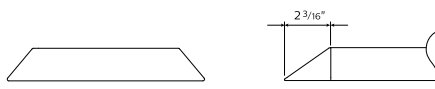
Mount Type
Consult separate mounting spec sheet for mount type options

Suspension Length
Distance from ceiling to top of luminaire in inches

Endcaps -

Integrated Controls Please indicate with check mark.

☐ Response Daylight Single Zone (DS)

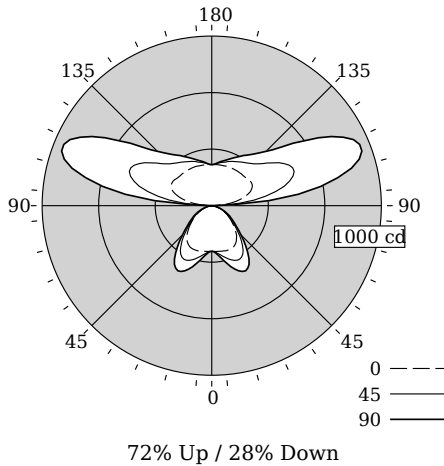


VERGE

SUSPENDED LED

DIRECT/INDIRECT, MESOOPTICS LENS

Photometry



Total Output	3264 lm
Efficacy	101.7 lm/W
CCT	3376K
CRI	83
R9	23
Distribution	72% Up / 28% Down
Peak/Zenith Ratio	3.90
Peak Output	944 cd @ 113°
Meets RP-1-04 recommendations for VDT-Intensive spaces	

Values per 4ft unit

Fixture photometry has been conducted by an NVLAP accredited testing laboratory in accordance with IESNA LM-79:2008

Lumen maintenance of the LEDs has been tested by the manufacturer in accordance with IESNA LM-80:2008

IES files for this and other photometric options can be downloaded online at www.lightingproducts.philips.com

Candela Distribution

Vertical Angle	Horizontal Angle				Zonal Lumens
	0	22.5	45	67.5	90
0	269	269	269	269	0
5	271	273	277	279	27
15	276	288	317	343	90
25	278	301	355	405	162
35	253	275	323	366	198
45	193	201	217	236	170
55	130	132	135	146	125
65	75	77	80	88	90
75	31	33	35	37	38
85	5	7	8	8	9
90	0	0	0	0	0
95	71	101	162	301	339
105	200	258	443	718	853
115	264	331	527	789	922
125	267	316	440	596	667
135	256	287	349	419	453
145	253	276	313	349	364
155	250	267	288	304	312
165	245	253	265	271	274
175	243	244	247	247	24
180	242	242	242	242	0

Coefficients of Utilization (%)

RCR	Ceiling:		80				70				50				0
	Wall:		70	50	30	10	70	50	30	10	70	50	30	10	0
0			102	102	102	102	91	91	91	71	71	71	71	71	28
1			93	89	85	82	83	80	77	62	60	59	59	59	24
2			85	78	72	67	76	70	65	55	52	49	49	49	20
3			77	69	62	56	69	62	56	49	44	41	41	41	17
4			71	61	53	47	63	55	48	43	39	35	35	35	15
5			65	54	46	41	58	49	42	38	34	30	30	30	13
6			60	48	41	35	53	44	37	35	30	26	26	26	12
7			55	43	36	31	49	39	33	31	26	23	23	23	10
8			51	39	32	27	46	36	29	28	24	20	20	20	9
9			47	36	29	24	42	32	26	26	21	18	18	18	8
10			44	33	26	21	39	30	23	24	19	16	16	16	7

Avg. Luminance (cd/m2)

Vertical Angle	Horizontal Angle		
	0	45	90
55	2199	2284	2554
65	1722	1837	2066
75	1162	1312	1387
85	557	891	891

Electrical Specifications

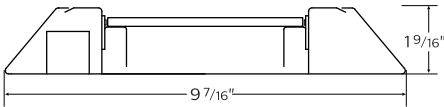
Input Voltage	120V
Input Power	32.1W
Input Current	0.3A
Power Factor	0.936
Tested values – contact technical support for rated values. Off-state power zero unless certain controls are specified.	

VERGE

SUSPENDED LED

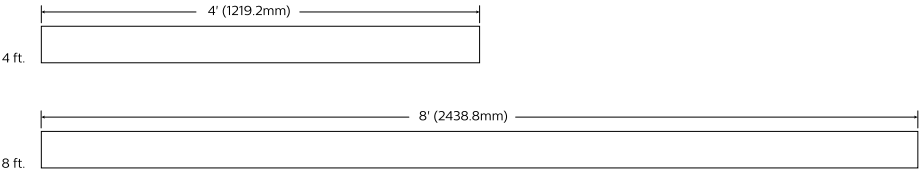
DIRECT/INDIRECT, MESOOPTICS LENS

Options and Details



Modules

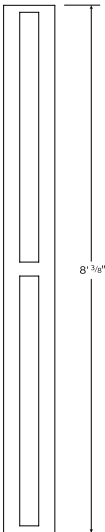
Module length excludes end caps. Nominal mounting spacing for individually mounted modules.



Note: Refer to installation instructions for exact mount.

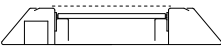
Optics & Styles

Lens view

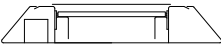


Suspended
(without endcaps)

Upper optics



G 80% Down Kit



J 100% Down Kit

Housing

Precision formed 18 gauge cold-rolled steel.

Weight

Maximum: Suspended 3.5lb/ft & Wall 2.5lb/ft

Optical System

The optical system is comprised of arrays of LEDs, edge-lighting a low profile Light Guide panel. The Light Guide panel allows light to be coupled and transmitted through total internal reflection. The microstructured surface of the panel optimizes the light extraction to create a direct indirect distribution. Light is purified and controlled by MesoOptics film as it passes through the nonglare acrylic lens. Standard distribution is 70% up/30% down for suspended mount version, and 60% up/40% down for wall mount version.

Standard Driver

Dimming: 0-10V - 5-100%. Output is Class 2 rated.

Lumen Maintenance

At an ambient temperature of 25°C, the LED lumen maintenance expectation is L₈₀ (12k) 60,000 hrs.

Mounting

Suspended: Tamper-resistant aircraft cable gripper provides infinite vertical adjustment capability. Aircraft cable, crimp and cable gripper are independently tested to meet stringent safety requirements.
Wall: Fixture is mounted flush to wall using hidden wall brackets. Brackets attach to existing structure, variable within 2"-5" of end or joint.

Joints

Self-aligning joining system with hands-free pre-joining wire access.

Endcaps

Diecast aluminum endcaps.

Electrical

Factory pre-wired to section ends with quick-wire connectors.

Approvals

Certified to UL, CSA and IES standards.

Finish

Standard finish is textured matte White, Black or Titanium Silver.

Environment

Rated for dry or damp locations in operating ambient temperatures 0-40°C (32-104°F). Certain luminaire components may be adversely affected by contaminants. Damage caused by sulfur, chlorine, petroleum based solutions or other contaminants are not covered under warranty.

Due to continuing product improvements, Philips Ledalite reserves the right to change the specifications without notice.



©2014 Koninklijke Philips N.V. All rights reserved.
Specifications are subject to change without notice.
www.philips.com/luminaires

7606LBEQN.pdf 02.15 page 3 of 3

Philips Lighting
North America Corporation
200 Franklin Square Drive
Somerset, NJ 08873
Phone: 855-486-2216

Philips Lighting Company
281 Hillmount Road
Markham ON, Canada L6C 2S3
Phone: 800-668-9008