



Linear

TruGroove perimeter ambient

3000 lm/4ft
3000/3500/4000K



Project: _____
Spec Type: _____
Catalog No: 4908LxEQ
Qty _____
Line Notes: _____

Placing emphasis where it belongs... Philips Ledalite brings you the latest high performance lighting solution for your designer toolbox, TruGroove LED perimeter ambient and graze. Whether your desire is to set the mood or create a statement, TruGroove lets you emphasize with illumination.

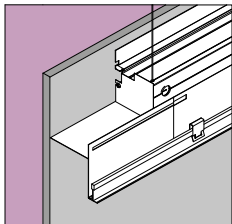
Ordering guide

Product Type	Source	Color Temp *	Lumens *	Optics	Housing	Ceiling / Trim	Run Length	Wiring †	Voltage	Driver
4908	L		E	Q	S					
TruGroove Perimeter Ambient	L LED	A 4000K B 3500K C 3000K	D 4100 lm/4ft E 3000 lm/4ft G 2100 lm/4ft K 1400 lm/4ft	Q Flush MesoOptics Lens	S Standard C Chicago Plenum	N All Ceiling Trims <i>Refer to separate slot & ceiling trim selection.</i>	02 2ft 03 3ft 04 4ft 05 5ft 06 6ft 08 8ft XX Total wall length from 2ft (to 1/8")	7 1 cct Dimming M 1 cct Dimming + EM Wiring N 1 cct Dimming + EM Batt. Pack	1 120V 2 277V 3 347V	E Philips Advance 0-10V (1% dim) <i>Other drivers available - consult your Philips representative</i>

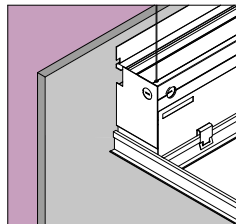
* Nominal values within a range. Consult photometry data for color temp, lumens & distribution of chosen configuration.

† Not all wiring types are available with all configurations. Consult Philips Ledalite for a complete list of available options.

Endsets (Left/Right) -



C Variable/Wall endplate



S Fixed/Pocket endplate (S)

Slot & Ceiling Trim -

Slot Height	Slot Panel	Ceiling Trim
2 1.75"	S Standard Solid	1 T-Grid
4 4"	A Air Return**	3 Drywall Trimless
		4 Drywall Trim

** Air Return is only available with a 4" slot height and T-Grid ceiling trim (e.g. 4A1)



TruGroove Perimeter Ambient

3000 lm/4ft

3000/3500/4000K

Optical System

Ambient: An extruded flush lens assembly with MesoOptics film is used to homogenize and control light from a linear array of downward-facing LEDs. This delivers a uniform, discreet ambient 'glow' along the top of a wall as well as directing fill light into the space.

Graze: A highly efficient parabolic reflector mounted in the reverse orientation from the wall focuses light from an angled array of LEDs into a tight linear beam. This creates dramatic grazing shadow effects down the length of a textured wall with textures $\frac{1}{16}$ " - 1" deep.

Slot & Trim

Lit modules are recessed into a provided slot, 4" deep as standard or 1.75" deep for narrow plenums. The standard slot avoids direct view of the optics when standing 3' or more from a 9' wall. Slot panels are available to integrate with T-grid or drywall ceilings. The drywall edge can be finished with either a supplied visible extruded aluminum trim or a mud-in 'trimless' flange.

Ends & Corners

The perimeter slot can be terminated at a chosen position with a flat / pocket end; or at a feature or wall with a variable length / wall end containing a sliding panel to close the plenum. All corners are variable length, with sliding panels and trimmable covers, available in 90° inside or outside versions. Other angles may be handled by request.

Housing

Precision aluminum extrusion, powder coated in white (Ambient) or black (Graze).

Weight

Maximum: Ambient 3.6lb/ft, Graze 3.8lb/ft

Electrical

Factory pre-wired to section ends with quick-wire connectors.

Standard Driver

Philips Advance Xitanium 0-10V, 1-100%. Class 2 rated output. Consult Philips Ledalite for other available drivers.

Standard Battery Pack

Philips Bodine, 90 min, 10W, Class 2 rated output, Emergency lumen output = 10W x luminaire efficacy x 1.1. Typical output: 1100lm. Available in ambient version.

Lumen Maintenance

LEDs have been tested by the manufacturer in accordance with IESNA LM-80-08. At an ambient temperature of 25°C, the LED lumen maintenance expectation according to IES TM-21-11 Reported methodology is: L80 (12k) >72,000 hrs.

Source Color

LEDs rated for color rendering CRI >80, R9 >0 and fixture to fixture color accuracy within 2 SDCM.

Mounting

Modules are supported on the wall side by a hidden extruded aluminum rail. On the ceiling side, support and final height adjustment are provided by an aircraft cable and gripper system attached to a bracket on the ceiling structure. Slot panels for closing the plenum are attached using either clips in the case of T-grid ceiling, or a screw mounted finishing trim for drywall.

Joints

Self-aligning joining system with hands-free pre-joining wire access.

Approvals

Certified to UL, CSA and IES standards.

Warranty

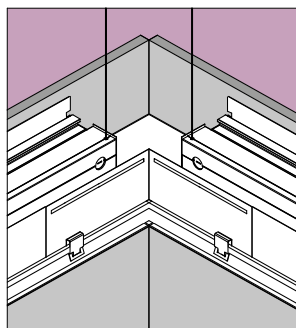
Philips indoor professional luminaires 5 year LED warranty: <http://www.philips.com/warranties>

Environment

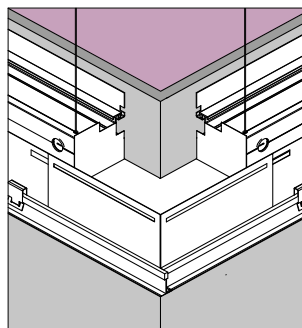
Rated for dry or damp locations in operating ambient temperatures 0-40°C (32-104°F). Certain luminaire components may be adversely affected by contaminants. Damage caused by sulfur, chlorine, petroleum based solutions or other contaminants in the area of operation are not covered under warranty. Not suitable for natatorium environments.

Due to continuing product improvements, Philips Ledalite reserves the right to change the specifications without notice.

Corners (grid shown)

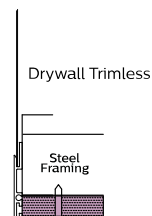
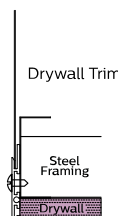
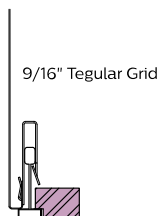
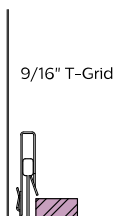
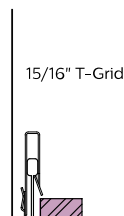


Inside Corner



Outside Corner

Ceiling Trims

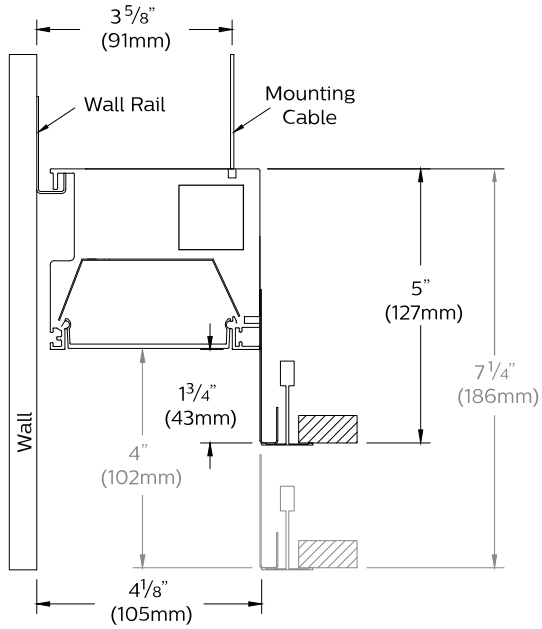


TruGroove Perimeter Ambient

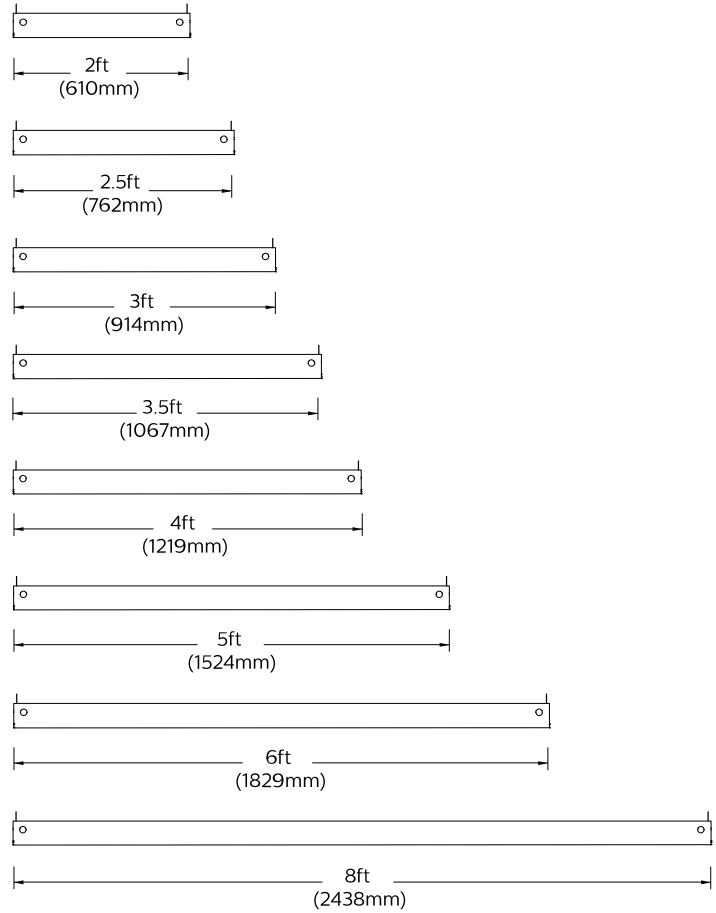
3000 lm/4ft

3000/3500/4000K

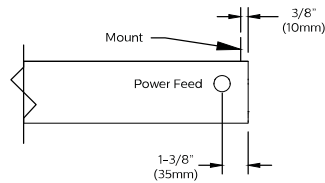
Dimensions



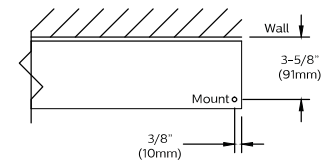
Modules



Side View



Top View

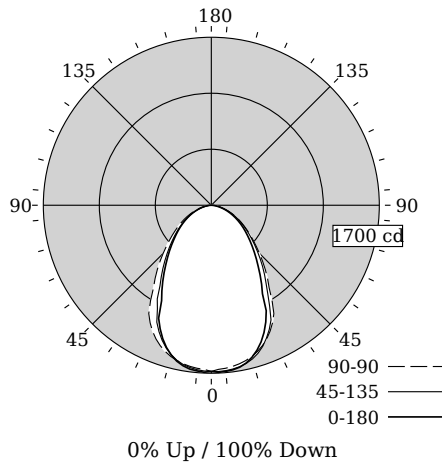


Power feed location available on room side $1\text{-}\frac{3}{8}$ " (35mm) from each joint or end condition.

TruGroove Perimeter Ambient

3000 lm/4ft
3000/3500/4000K

Photometry - 3500K



Candela Distribution

Vertical Angle	Horizontal Angle				Zonal Lumens
	0	45	90	135	
0	1682	1682	1682	1682	1682
5	1687	1680	1656	1670	1682
15	1592	1610	1584	1567	1568
25	1304	1387	1407	1305	1262
35	860	966	1020	883	833
45	584	659	690	598	568
55	392	435	445	394	382
65	239	267	270	237	236
75	113	131	127	109	115
85	24	33	27	22	28
90	0	0	0	0	0
95	0	0	0	0	0
105	0	0	0	0	0
115	0	0	0	0	0
125	0	0	0	0	0
135	0	0	0	0	0
145	0	0	0	0	0
155	0	0	0	0	0
165	0	0	0	0	0
175	0	0	0	0	0
180	0	0	0	0	0

Fixture photometry has been conducted in accordance with IESNA LM-79-08

IES files for this and other photometric options can be downloaded online at www.lightingproducts.philips.com

Coefficients of Utilization (%)

RCR	Ceiling										
	70	50	30	10	70	50	30	50	30	10	0
0	119	119	119	119	116	116	116	111	111	111	100
1	110	106	103	99	108	104	101	100	97	95	87
2	102	95	89	84	99	93	87	89	85	81	75
3	94	85	78	72	92	83	77	80	75	70	66
4	87	76	69	63	85	75	68	73	66	61	58
5	81	69	61	55	79	68	61	66	59	54	51
6	75	63	55	49	73	62	55	61	54	49	46
7	70	58	50	44	69	57	50	56	49	44	42
8	66	53	46	40	64	53	45	52	45	40	38
9	62	50	42	37	61	49	42	48	41	37	35
10	58	46	39	34	57	46	39	45	38	34	32

Avg. Luminance (cd/m2)

Vertical Angle	Horizontal Angle		
	0	90	180
55	7363	8351	7164
65	6087	6882	6005
75	4700	5265	4788
85	2965	3358	3463

Distribution

Hemisphere	0% Up / 100% Down
Glare Control	Meets RP-1-12 recommendations for VDT-Normal spaces
Spacing Along (0 °)	1.04
Spacing Across (90 °)	1.14
Spacing at 180 °	0.99

Philips Ledalite

LED lighting facts
A Program of the U.S. DOE

Light Output (Lumens) 3077
Watts 27.9
Lumens per Watt (Efficacy) 110.29

Color Accuracy
Color Rendering Index (CRI) 82

Light Color
Correlated Color Temperature (CCT) 3394 (Bright White)

2700K 3000K 4500K 6500K

All results are according to IESNA LM-79-2008: Approved Method for the Electrical and Photometric Testing of Solid-State Lighting. The U.S. Department of Energy (DOE) verifies product test data and results.

Visit www.lightingfacts.com for the Label Reference Guide.

Registration Number: F46Z-TXURKW (3/27/2017)
Model Number: 49x8LBEQ
Type: Luminaire - Linear

TruGroove Perimeter Ambient

3000 lm/4ft

3000/3500/4000K

Optical Performance

Nominal CCT:	3000K	3500K	4000K
Flux (lm)	2937	3077	3102
Efficacy (lm/W)	106.8	110.3	112.0
Power (W)	27.5	27.9	27.7
CCT (K)	3120	3394	4083
CRI	85	82	84
R9	15	4	10
x	0.4279	0.4108	0.3773
y	0.3995	0.3922	0.3763
Duv	0.0006	0.0006	0.0008

Electrical Performance - 3500K

Input Voltage	120V	277V	347V
Input Power	27.9W	28.0W	27.9W
Input Current	0.24A	0.10A	0.08A
Power Factor	0.950	0.994	0.951
Total Harm. Distortion	14.7%	8.2%	12.0%

Tested values . contact technical support for rated values. Off-state power zero unless certain controls are specified.

