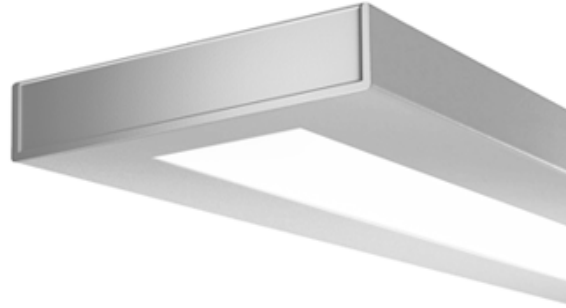




Linear

Sync Suspended

6500 lm/4ft w/ 80% Down Kit*
3000/3500/4000K



Project: _____
 Spec Type: _____
 Catalog No: 7406LxAQG
 Qty _____
 Line Notes: _____

With its slim, uncluttered design, Sync is the epitome of compact style. Sync offers true direct/indirect lighting distribution and luminous aesthetics with exceptional glare control.

Ordering guide

Product Type	Source	Color Temp *	Lumens *	Lower Optics	Upper Optics	Run Length	Wiring †	Voltage	Driver	Finish
<input type="text" value="7406"/>	<input type="text" value="L"/>	<input type="text"/>	<input type="text" value="A"/>	<input type="text" value="Q"/>	<input type="text" value="G"/>	<input type="text"/>	<input type="text"/>	<input type="text"/>	<input type="text"/>	<input type="text"/>
Sync Direct/Indirect	L LED	A 4000K B 3500K C 3000K	A 6500 lm/4ft C 4600 lm/4ft E 3400 lm/4ft	Q MesoOptics Lens	N Lightguide D 55% Down Kit G 80% Down Kit J 100% Down Kit	04 4' 08 8' XX Total run length (4' increments)	7 1 cct Dimming E 2 cct A/B Dimming M 1 cct Dimming + EM Wiring N 1 cct Dimming + EM Batt. Pack	1 120V 2 277V 3 347V	E Philips Advance 0-10V (1% dim)	W Standard White T Titanium Silver B Black C Custom

* Nominal values within a range. Down kits reduce output & efficacy. Consult photometry data for color temp, lumens & distribution of chosen configuration.
 † Not all wiring types are available with all configurations. Consult Philips Ledalite for a complete list of available options.

Mounting Hardware

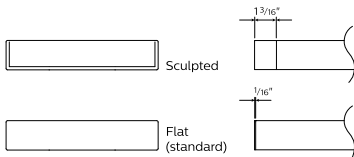
Mount Type
Consult separate mounting spec sheet for mount type options

Suspension Length
Distance from ceiling to top of luminaire in inches

Endcaps -

Integrated Controls Please indicate with check mark.

Response Daylight Single Zone (DS)



Sync Suspended

6500 lm/4ft w/ 80% Down Kit*

3000/3500/4000K

Optical System

The optical system contains arrays of LEDs edge-lighting a low profile light-guide panel, using total internal reflection to homogenize the sources. The microstructured surface of the panel optimizes light extraction to create an efficacious direct/indirect distribution. Light is purified and controlled by MesoOptics film as it passes through a non-glare acrylic lens. Standard distribution is 75% up / 25% down for suspended and 65% up / 35% down for wall mount version.

Endcaps

Diecast aluminum endcaps, available in flat (standard) or sculpted (optional).

Finish

Standard finish is a textured matte powder coat in white, black or titanium silver.

Housing

Precision formed 18 gauge cold-rolled steel.

Weight

Maximum: Suspended 3.75lb/ft & Wall 3.0lb/ft.

Electrical

Factory pre-wired to section ends with quick-wire connectors.

Standard Driver

Philips Advance Xitanium 0-10V, 1-100%. Class 2 rated output. Consult Philips Ledalite for other available drivers.

Standard Battery Pack

Philips Bodine, 90 min, 10W, Class 2 rated output. Emergency lumen output = 10W x luminaire efficacy x 1.1. Typical output: 1100lm.

Lumen Maintenance

LEDs have been tested by the manufacturer in accordance with IESNA LM-80-08. At an ambient temperature of 25°C, the LED lumen maintenance expectation according to IES TM-21-11 is: L₈₀ (12k) >72,000 hrs (Reported methodology).

Source Color

LEDs rated for color rendering CRI >80 and fixture to fixture color accuracy within 2 SDCM.

Controls

Suspended version available with the following integrated controls:
Response daylight sensor (for single zone).

Mounting

Suspended: Tamper-resistant aircraft cable gripper provides unlimited vertical adjustment. Aircraft cable, crimp and cable gripper are independently tested to meet stringent safety requirements.

Wall: Fixture is mounted flush to wall using hidden wall brackets which attach to existing structure, variable within 2"-5" of end or joint.

Joints

Self-aligning joining system with hands-free pre-joining wire access.

Approvals

Certified to UL, CSA and IES standards. Certain suspended versions without down kits are DesignLights Consortium® qualified. Please see the DLC QPL list for exact catalog numbers (www.designlights.org/QPL).

Warranty

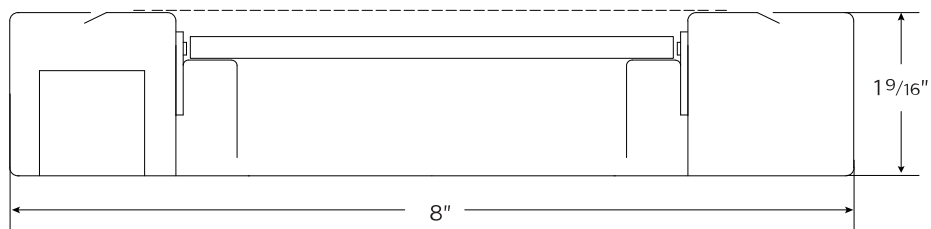
Philips indoor professional luminaires 5 year LED warranty: www.philips.com/warranties.

Environment

Rated for dry or damp locations in operating ambient temperatures 0-40°C (32-104°F). Certain luminaire components may be adversely affected by contaminants. Damage caused by sulfur, chlorine, petroleum based solutions or other contaminants are not covered under warranty. Not suitable for natatorium environments.

Due to continuing product improvements, Philips Ledalite reserves the right to change the specifications without notice.

Dimensions - Cross Section



Sync Suspended

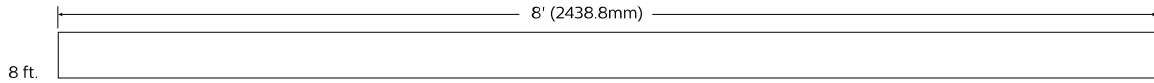
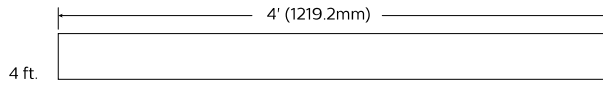
6500 lm/4ft w/ 80% Down Kit*

3000/3500/4000K

Dimensions - Modules

Modules

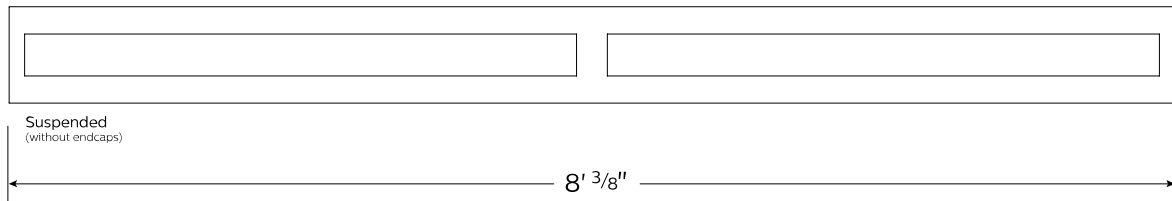
Module length excludes end caps. Nominal mounting spacing for individually mounted modules.



Note: Refer to installation instructions for exact mount.

Optics and Styles

Lens view



Upper optics

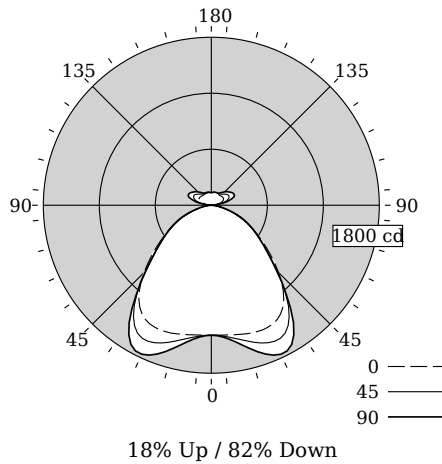


Sync Suspended

6500 lm/4ft w/ 80% Down Kit*

3000/3500/4000K

Photometry - 3500K



Candela Distribution

Vertical Angle	Horizontal Angle				Zonal Lumens
	0	22.5	45	67.5	
0	1393	1393	1393	1393	1393
5	1397	1399	1407	1415	1417
15	1426	1442	1507	1569	1588
25	1440	1476	1608	1720	1762
35	1336	1361	1454	1515	1535
45	1020	1006	996	990	988
55	663	647	633	633	637
65	393	387	389	399	404
75	160	162	164	168	172
85	28	32	34	36	36
90	0	0	0	0	0
95	20	22	26	28	28
105	107	122	160	185	197
115	144	164	209	260	270
125	150	164	203	243	245
135	142	150	168	199	203
145	138	142	150	160	162
155	138	142	146	146	146
165	138	140	142	144	144
175	136	136	136	138	138
180	136	136	136	136	136

Values per 4ft unit

Fixture photometry has been conducted in accordance with IESNA LM-79-08

IES files for this and other photometric options can be downloaded online at www.lightingproducts.philips.com

Coefficients of Utilization (%)

RCR	Ceiling		80		10		70		50		10		0	
	70	50	30	10	70	50	30	10	50	30	10	50	30	10
0	115	115	115	115	110	110	110	101	101	101	82	82	82	82
1	106	101	98	94	101	97	94	90	87	85	70	70	70	70
2	97	89	83	78	93	86	80	80	75	71	60	60	60	60
3	89	79	72	66	85	76	69	71	65	61	51	51	51	51
4	81	70	62	56	78	68	61	63	57	52	44	44	44	44
5	75	63	55	49	72	61	53	57	50	45	39	39	39	39
6	69	57	49	43	66	55	47	51	45	40	34	34	34	34
7	64	52	43	38	62	50	42	47	40	35	30	30	30	30
8	60	47	39	34	57	46	38	43	36	32	27	27	27	27
9	56	43	35	30	54	42	35	39	33	29	24	24	24	24
10	52	40	32	27	50	39	32	36	30	26	22	22	22	22

Avg. Luminance (cd/m2)

Vertical Angle	Horizontal Angle		
	0	45	90
55	11215	10714	10781
65	9014	8924	9286
75	5991	6139	6435
85	3075	3734	3954

Distribution

Hemisphere	18% Up / 82% Down
Glare Control	None
Spacing Along (0 °)	1.45
Spacing Across (90 °)	1.54

Philips Ledalite

LED lighting facts
A Program of the U.S. DOE

Light Output (Lumens) **5087**

Watts **56.7**

Lumens per Watt (Efficacy) **89.72**

Color Accuracy
Color Rendering Index (CRI) **82**

Light Color
Correlated Color Temperature (CCT) **3312 (Bright White)**

2700K 3000K 4500K 6500K

All results are according to IESNA LM-79-2008: Approved Method for the Electrical and Photometric Testing of Solid-State Lighting. The U.S. Department of Energy (DOE) verifies product test data and results.

Visit www.lightingfacts.com for the Label Reference Guide.

Registration Number: F46Z-74XUTW (10/31/2016)
Model Number: 7406LBAQG
Type: Luminaire - Linear

Sync Suspended

6500 lm/4ft w/ 80% Down Kit*

3000/3500/4000K

Optical Performance

Nominal CCT:	3000K	3500K	4000K
Flux (lm)	4871	5087	5232
Efficacy (lm/W)	85.6	89.7	92.6
Power (W)	56.9	56.7	56.5
CCT (K)	3045	3312	3931
CRI	84	82	83
R9	10	-1	5
x	0.4338	0.4167	0.3849
y	0.4031	0.3968	0.3837
Duv	0.0000	0.0000	0.0020

Electrical Performance - 3500K

Input Voltage	120V	277V	347V
Input Power	56.7W	56.2W	56.9W
Input Current	0.47A	0.21A	0.17A
Power Factor	0.995	0.987	0.970
Total Harm. Distortion	9.4%	10.2%	11.0%

Tested values . contact technical support for rated values. Off-state power zero unless certain controls are specified.

