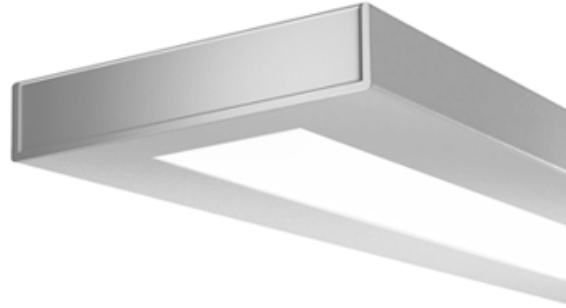




Linear

Sync Suspended

4600 lm/4ft w/ 80% Down Kit*
3000/3500/4000K



Project: _____
 Spec Type: _____
 Catalog No: 7406LxCQG _____
 Qty _____
 Line Notes: _____

With its slim, uncluttered design, Sync is the epitome of compact style. Sync offers true direct/indirect lighting distribution and luminous aesthetics with exceptional glare control.

Ordering guide

Product Type	Source	Color Temp *	Lumens *	Lower Optics	Upper Optics	Run Length	Wiring †	Voltage	Driver	Finish
<input type="text" value="7406"/>	<input type="text" value="L"/>	<input type="text"/>	<input type="text" value="C"/>	<input type="text" value="Q"/>	<input type="text" value="G"/>	<input type="text"/>	<input type="text"/>	<input type="text"/>	<input type="text"/>	<input type="text"/>
Sync Direct/Indirect	L LED	A 4000K B 3500K C 3000K	A 6500 lm/4ft C 4600 lm/4ft E 3400 lm/4ft	Q MesoOptics Lens	N Lightguide D 55% Down Kit G 80% Down Kit J 100% Down Kit	04 4' 08 8' XX Total run length (4' increments)	7 1 cct Dimming E 2 cct A/B Dimming M 1 cct Dimming + EM Wiring N 1 cct Dimming + EM Batt. Pack	1 120V 2 277V 3 347V	E Philips Advance 0-10V (1% dim)	W Standard White T Titanium Silver B Black C Custom

* Nominal values within a range. Down kits reduce output & efficacy. Consult photometry data for color temp, lumens & distribution of chosen configuration.
 † Not all wiring types are available with all configurations. Consult Philips Ledalite for a complete list of available options.

Mounting Hardware

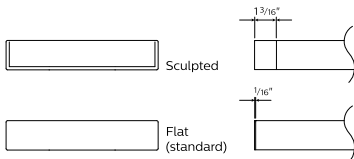
Mount Type
Consult separate mounting spec sheet for mount type options

Suspension Length
Distance from ceiling to top of luminaire in inches

Endcaps -

Integrated Controls Please indicate with check mark.

Response Daylight Single Zone (DS)



Sync Suspended

4600 lm/4ft w/ 80% Down Kit*

3000/3500/4000K

Optical System

The optical system contains arrays of LEDs edge-lighting a low profile light-guide panel, using total internal reflection to homogenize the sources. The microstructured surface of the panel optimizes light extraction to create an efficacious direct/indirect distribution. Light is purified and controlled by MesoOptics film as it passes through a non-glare acrylic lens. Standard distribution is 75% up / 25% down for suspended and 65% up / 35% down for wall mount version.

Endcaps

Diecast aluminum endcaps, available in flat (standard) or sculpted (optional).

Finish

Standard finish is a textured matte powder coat in white, black or titanium silver.

Housing

Precision formed 18 gauge cold-rolled steel.

Weight

Maximum: Suspended 3.75lb/ft & Wall 3.0lb/ft.

Electrical

Factory pre-wired to section ends with quick-wire connectors.

Standard Driver

Philips Advance Xitanium 0-10V, 1-100%. Class 2 rated output. Consult Philips Ledalite for other available drivers.

Standard Battery Pack

Philips Bodine, 90 min, 10W, Class 2 rated output. Emergency lumen output = 10W x luminaire efficacy x 1.1. Typical output: 1100lm.

Lumen Maintenance

LEDs have been tested by the manufacturer in accordance with IESNA LM-80-08. At an ambient temperature of 25°C, the LED lumen maintenance expectation according to IES TM-21-11 is: L80 (12k) >72,000 hrs (**Reported** methodology).

Source Color

LEDs rated for color rendering CRI >80 and fixture to fixture color accuracy within 2 SDCM.

Controls

Suspended version available with the following integrated controls:
Response daylight sensor (for single zone).

Mounting

Suspended: Tamper-resistant aircraft cable gripper provides unlimited vertical adjustment. Aircraft cable, crimp and cable gripper are independently tested to meet stringent safety requirements.

Wall: Fixture is mounted flush to wall using hidden wall brackets which attach to existing structure, variable within 2"-5" of end or joint.

Joints

Self-aligning joining system with hands-free pre-joining wire access.

Approvals

Certified to UL, CSA and IES standards. Certain suspended versions without down kits are DesignLights Consortium® qualified. Please see the DLC QPL list for exact catalog numbers (www.designlights.org/QPL).

Warranty

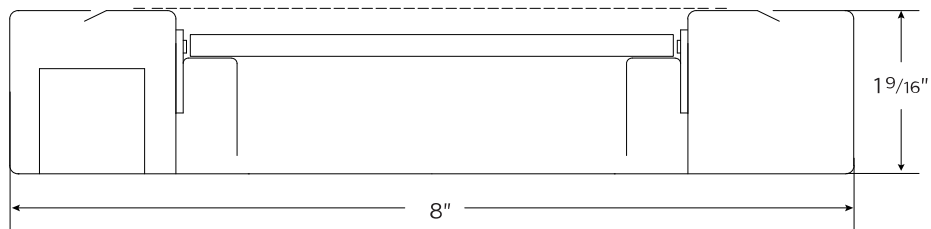
Philips indoor professional luminaires 5 year LED warranty: www.philips.com/warranties.

Environment

Rated for dry or damp locations in operating ambient temperatures 0-40°C (32-104°F). Certain luminaire components may be adversely affected by contaminants. Damage caused by sulfur, chlorine, petroleum based solutions or other contaminants are not covered under warranty. Not suitable for natatorium environments.

Due to continuing product improvements, Philips Ledalite reserves the right to change the specifications without notice.

Dimensions - Cross Section



Sync Suspended

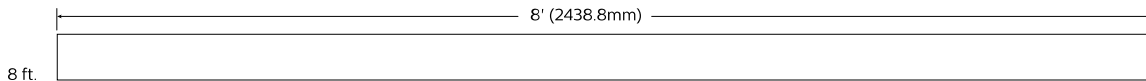
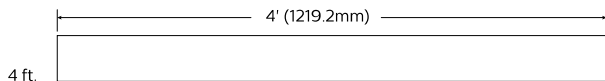
4600 lm/4ft w/ 80% Down Kit*

3000/3500/4000K

Dimensions - Modules

Modules

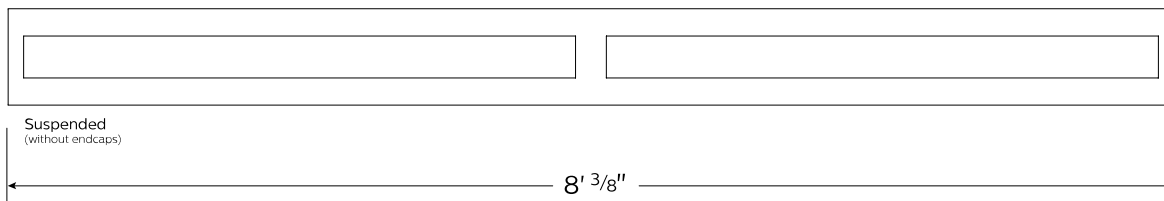
Module length excludes end caps. Nominal mounting spacing for individually mounted modules.



Note: Refer to installation instructions for exact mount.

Optics and Styles

Lens view



Upper optics



G 80% Down Kit



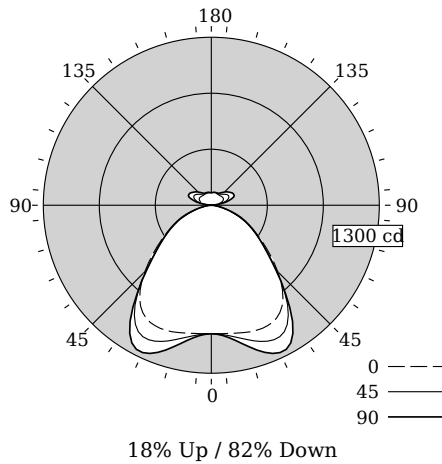
J 100% Down Kit

Sync Suspended

4600 lm/4ft w/ 80% Down Kit*

3000/3500/4000K

Photometry - 3500K



Candela Distribution

Vertical Angle	Horizontal Angle				Zonal Lumens
	0	22.5	45	67.5	
0	995	995	995	995	995
5	998	999	1000	1010	1012
15	1019	1030	1076	1120	1134
25	1029	1054	1148	1229	1258
35	954	972	1038	1082	1096
45	728	719	712	707	706
55	473	462	452	452	455
65	280	276	278	285	289
75	114	116	117	120	123
85	20	23	24	25	25
90	0	0	0	0	0
95	14	15	18	20	20
105	76	87	114	132	141
115	103	117	149	186	193
125	107	117	145	173	175
135	101	107	120	142	145
145	99	101	107	114	116
155	99	101	104	104	104
165	99	100	101	103	103
175	97	97	97	99	99
180	97	97	97	97	97

Values per 4ft unit

Fixture photometry has been conducted in accordance with IESNA LM-79-08

IES files for this and other photometric options can be downloaded online at www.lightingproducts.philips.com

Coefficients of Utilization (%)

RCR	Ceiling										0
	70	50	30	10	70	50	30	10	70	50	
0	115	115	115	115	110	110	110	101	101	101	82
1	106	101	98	94	101	97	94	90	87	85	70
2	97	89	83	78	93	86	80	80	75	71	60
3	89	79	72	66	85	76	69	71	65	61	51
4	81	70	62	56	78	68	61	63	57	52	44
5	75	63	55	49	72	61	53	57	50	45	39
6	69	57	49	43	66	55	47	51	45	40	34
7	64	52	43	38	62	50	42	47	40	35	30
8	60	47	39	34	57	46	38	43	36	32	27
9	56	43	35	30	54	42	35	39	33	29	24
10	52	40	32	27	50	39	32	36	30	26	22

Avg. Luminance (cd/m2)

Vertical Angle	Horizontal Angle		
	0	45	90
55	8009	7651	7699
65	6438	6373	6632
75	4279	4384	4596
85	2196	2667	2824

Distribution

Hemisphere	18% Up / 82% Down
Glare Control	Meets RP-1-12 recommendations for VDT-Normal spaces
Spacing Along (0 °)	1.45
Spacing Across (90 °)	1.54

Philips Ledalite

lighting facts®

A Program of the U.S. DOE

Light Output (Lumens) 3633

Watts 39.4

Lumens per Watt (Efficacy) 92.21

Color Accuracy 82

Color Rendering Index (CRI)

Light Color 3312 (Bright White)

Correlated Color Temperature (CCT)

2700K 3000K 4500K 6500K

All results are according to IESNA LM-79-2008: Approved Method for the Electrical and Photometric Testing of Solid-State Lighting. The U.S. Department of Energy (DOE) verifies product test data and results.

Visit www.lightingfacts.com for the Label Reference Guide.

Registration Number: F46Z-YTALZA (10/31/2016)
Model Number: 7406LBCQG
Type: Luminaire - Linear

Sync Suspended

4600 lm/4ft w/ 80% Down Kit*

3000/3500/4000K

Optical Performance

Nominal CCT:	3000K	3500K	4000K
Flux (lm)	3478	3633	3736
Efficacy (lm/W)	88.1	92.2	95.3
Power (W)	39.5	39.4	39.2
CCT (K)	3045	3312	3931
CRI	84	82	83
R9	10	-1	5
x	0.4338	0.4167	0.3849
y	0.4031	0.3968	0.3837
Duv	0.0000	0.0000	0.0020

Electrical Performance - 3500K

Input Voltage	120V	277V	347V
Input Power	39.4W	38.8W	38.9W
Input Current	0.33A	0.14A	0.12A
Power Factor	0.998	0.980	0.972
Total Harm. Distortion	5.4%	8.8%	9.0%

Tested values . contact technical support for rated values. Off-state power zero unless certain controls are specified.

