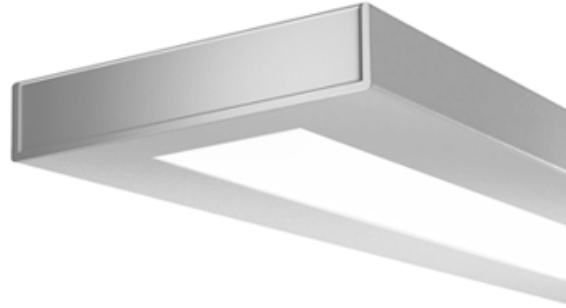




Linear

Sync Suspended

3400 lm/4ft w/ 55% Down Kit*
3000/3500/4000K



Project: _____
 Spec Type: _____
 Catalog No: 7406LxEQD _____
 Qty _____
 Line Notes: _____

With its slim, uncluttered design, Sync is the epitome of compact style. Sync offers true direct/indirect lighting distribution and luminous aesthetics with exceptional glare control.

Ordering guide

Product Type	Source	Color Temp *	Lumens *	Lower Optics	Upper Optics	Run Length	Wiring †	Voltage	Driver	Finish
<input type="text" value="7406"/>	<input type="text" value="L"/>	<input type="text"/>	<input type="text" value="E"/>	<input type="text" value="Q"/>	<input type="text" value="D"/>	<input type="text"/>	<input type="text"/>	<input type="text"/>	<input type="text"/>	<input type="text"/>
Sync Direct/Indirect	L LED	A 4000K B 3500K C 3000K	A 6500 lm/4ft C 4600 lm/4ft E 3400 lm/4ft	Q MesoOptics Lens	N Lightguide D 55% Down Kit G 80% Down Kit J 100% Down Kit	04 4' 08 8' XX Total run length (4' increments)	7 1 cct Dimming E 2 cct A/B Dimming M 1 cct Dimming + EM Wiring N 1 cct Dimming + EM Batt. Pack	1 120V 2 277V 3 347V	E Philips Advance 0-10V (1% dim)	W Standard White T Titanium Silver B Black C Custom

* Nominal values within a range. Down kits reduce output & efficacy. Consult photometry data for color temp, lumens & distribution of chosen configuration.
 † Not all wiring types are available with all configurations. Consult Philips Ledalite for a complete list of available options.

Mounting Hardware

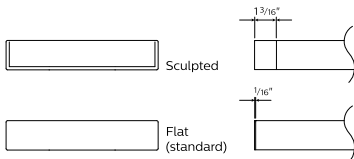
Mount Type
Consult separate mounting spec sheet for mount type options

Suspension Length
Distance from ceiling to top of luminaire in inches

Endcaps -

Integrated Controls Please indicate with check mark.

Response Daylight Single Zone (DS)



Sync Suspended

3400 lm/4ft w/ 55% Down Kit*

3000/3500/4000K

Optical System

The optical system contains arrays of LEDs edge-lighting a low profile light-guide panel, using total internal reflection to homogenize the sources. The microstructured surface of the panel optimizes light extraction to create an efficacious direct/indirect distribution. Light is purified and controlled by MesoOptics film as it passes through a non-glare acrylic lens. Standard distribution is 75% up / 25% down for suspended and 65% up / 35% down for wall mount version.

Endcaps

Diecast aluminum endcaps, available in flat (standard) or sculpted (optional).

Finish

Standard finish is a textured matte powder coat in white, black or titanium silver.

Housing

Precision formed 18 gauge cold-rolled steel.

Weight

Maximum: Suspended 3.75lb/ft & Wall 3.0lb/ft.

Electrical

Factory pre-wired to section ends with quick-wire connectors.

Standard Driver

Philips Advance Xitanium 0-10V, 1-100%. Class 2 rated output. Consult Philips Ledalite for other available drivers.

Standard Battery Pack

Philips Bodine, 90 min, 10W, Class 2 rated output. Emergency lumen output = 10W x luminaire efficacy x 1.1. Typical output: 1100lm.

Lumen Maintenance

LEDs have been tested by the manufacturer in accordance with IESNA LM-80-08. At an ambient temperature of 25°C, the LED lumen maintenance expectation according to IES TM-21-11 is: L80 (12k) >72,000 hrs (**Reported** methodology).

Source Color

LEDs rated for color rendering CRI >80 and fixture to fixture color accuracy within 2 SDCM.

Controls

Suspended version available with the following integrated controls:
Response daylight sensor (for single zone).

Mounting

Suspended: Tamper-resistant aircraft cable gripper provides unlimited vertical adjustment. Aircraft cable, crimp and cable gripper are independently tested to meet stringent safety requirements.

Wall: Fixture is mounted flush to wall using hidden wall brackets which attach to existing structure, variable within 2"-5" of end or joint.

Joints

Self-aligning joining system with hands-free pre-joining wire access.

Approvals

Certified to UL, CSA and IES standards. Certain suspended versions without down kits are DesignLights Consortium® qualified. Please see the DLC QPL list for exact catalog numbers (www.designlights.org/QPL).

Warranty

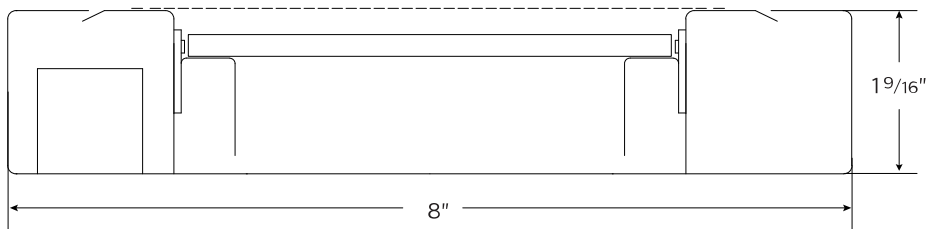
Philips indoor professional luminaires 5 year LED warranty: www.philips.com/warranties.

Environment

Rated for dry or damp locations in operating ambient temperatures 0-40°C (32-104°F). Certain luminaire components may be adversely affected by contaminants. Damage caused by sulfur, chlorine, petroleum based solutions or other contaminants are not covered under warranty. Not suitable for natatorium environments.

Due to continuing product improvements, Philips Ledalite reserves the right to change the specifications without notice.

Dimensions - Cross Section



Sync Suspended

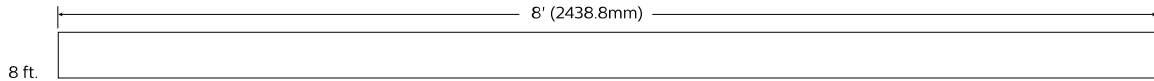
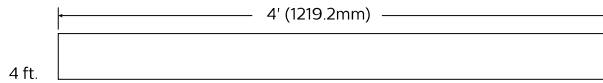
3400 lm/4ft w/ 55% Down Kit*

3000/3500/4000K

Dimensions - Modules

Modules

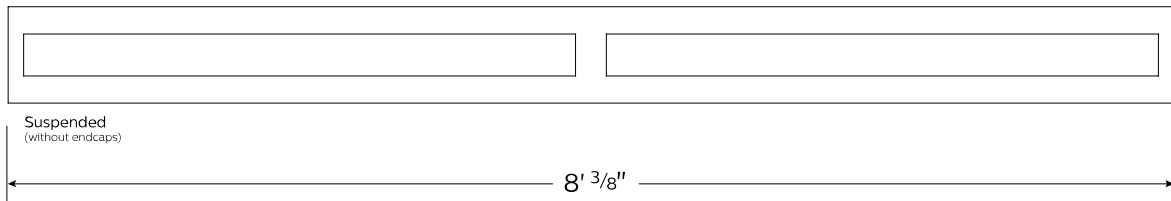
Module length excludes end caps. Nominal mounting spacing for individually mounted modules.



Note: Refer to installation instructions for exact mount.

Optics and Styles

Lens view



Upper optics



G 80% Down Kit



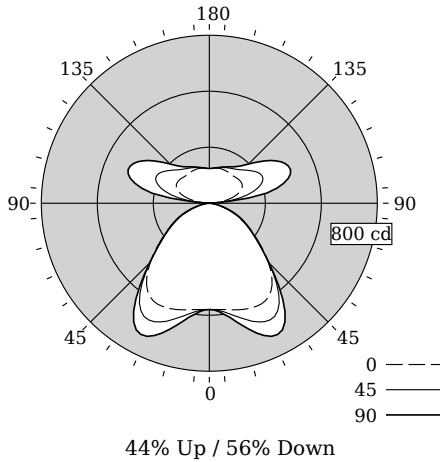
J 100% Down Kit

Sync Suspended

3400 lm/4ft w/ 55% Down Kit*

3000/3500/4000K

Photometry - 3500K



Candela Distribution

Vertical Angle	Horizontal Angle				Zonal Lumens
	0	22.5	45	67.5	
0	506	506	506	506	506
5	508	509	513	516	518
15	525	533	564	592	601
25	540	560	622	679	699
35	512	529	580	616	628
45	398	396	401	402	402
55	260	254	252	254	256
65	153	152	155	159	162
75	63	65	66	68	68
85	11	13	14	15	15
90	0	0	0	0	0
95	28	35	52	70	77
105	122	152	217	309	366
115	171	205	282	370	417
125	182	208	264	328	355
135	175	192	224	255	264
145	172	181	200	212	212
155	173	176	187	192	191
165	172	172	175	176	176
175	167	167	167	167	167
180	166	166	166	166	166

Values per 4ft unit

Fixture photometry has been conducted in accordance with IESNA LM-79-08

IES files for this and other photometric options can be downloaded online at www.lightingproducts.philips.com

Coefficients of Utilization (%)

RCR	Ceiling												
	70	50	30	10	70	50	30	10	70	50	30	10	0
0	109	109	109	109	101	101	101	87	87	87	56	56	56
1	100	95	92	88	93	89	86	77	74	72	48	48	48
2	91	84	78	73	84	78	73	68	64	60	41	41	41
3	83	74	67	61	77	69	63	60	55	51	35	35	35
4	76	66	58	52	71	61	55	54	48	44	30	30	30
5	70	59	51	45	65	55	48	48	42	38	26	26	26
6	65	53	45	39	60	49	42	43	37	33	23	23	23
7	60	48	40	34	56	45	38	39	33	29	21	21	21
8	55	43	35	30	52	41	34	36	30	26	18	18	18
9	52	39	32	27	48	37	30	33	27	23	17	17	17
10	48	36	29	24	45	34	27	30	25	21	15	15	15

Avg. Luminance (cd/m2)

Vertical Angle	Horizontal Angle		
	0	45	90
55	4398	4256	4327
65	3523	3547	3715
75	2348	2466	2544
85	1279	1511	1627

Distribution

Hemisphere	44% Up / 56% Down
Glare Control	Meets RP-1-12 recommendations for VDT-Critical spaces
Spacing Along (0 °)	1.5
Spacing Across (90 °)	1.62

Philips Ledalite

LED lighting facts
A Program of the U.S. DOE

Light Output (Lumens) 2910
Watts 28.4
Lumens per Watt (Efficacy) 102.46

Color Accuracy
Color Rendering Index (CRI) 82

Light Color
Correlated Color Temperature (CCT) 3312 (Bright White)

2700K 3000K 4500K 6500K

All results are according to IESNA LM-79-2008: Approved Method for the Electrical and Photometric Testing of Solid-State Lighting. The U.S. Department of Energy (DOE) verifies product test data and results.

Visit www.lightingfacts.com for the Label Reference Guide.

Registration Number: F46Z-MS4G56 (10/31/2016)
Model Number: 7406LBEQD
Type: Luminaire - Linear

Sync Suspended

3400 lm/4ft w/ 55% Down Kit*

3000/3500/4000K

Optical Performance

Nominal CCT:	3000K	3500K	4000K
Flux (lm)	2787	2910	2993
Efficacy (lm/W)	97.8	102.5	105.8
Power (W)	28.5	28.4	28.3
CCT (K)	3045	3312	3931
CRI	84	82	83
R9	10	-1	5
x	0.4338	0.4167	0.3849
y	0.4031	0.3968	0.3837
Duv	0.0000	0.0000	0.0020

Electrical Performance - 3500K

Input Voltage	120V	277V	347V
Input Power	28.4W	28.4W	28.5W
Input Current	0.24A	0.11A	0.09A
Power Factor	0.994	0.962	0.953
Total Harm. Distortion	8.0%	11.6%	11.0%

Tested values . contact technical support for rated values. Off-state power zero unless certain controls are specified.

