

Sona

Suspended | Wall

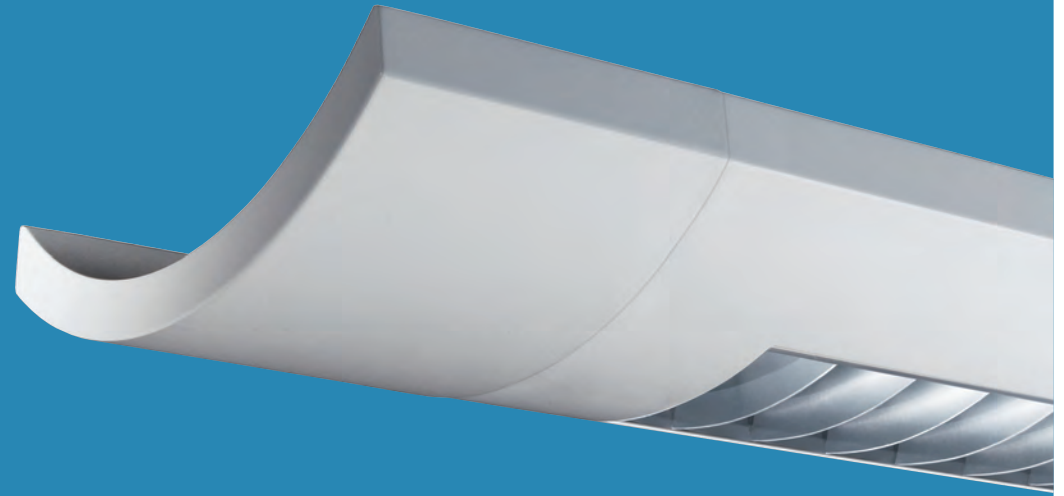


PHILIPS
 **LEDALITE**



Sona

Looks, performance, pricing and delivery—Sona gets it right on many levels. An elegant curved profile with a selection of options for distribution, lamping and aesthetics—all available on our "1"-day QuickShip program at an entry-level price point.



Suspended | Wall



Options for every space

Sona offers suspended and wall mounted lighting systems with a full range of distributions. Solve virtually any lighting challenge using a diverse set of lumen packages including T8, T5HO and T5 lamping options.

Multi-tasking

Direct/indirect luminaires provide even more flexibility. Designers can finesse light levels onsite by using Variable Optics kits and lamp separators to adjust the amount of downlight required for different visual tasks, while still maintaining a consistent aesthetic throughout the space.

Because looks matter

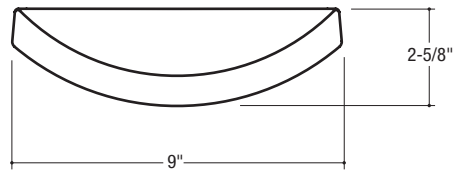
Select from two curved louver options that complement the fixture's form, or two distinct perforation aesthetics that introduce luminous elements to the space. Sona's sculptured endcaps complete linear runs with form and elegance.

Quality, on time and on budget

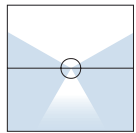
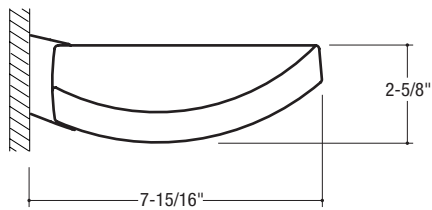
How? Ledalite's state-of-the-art, fully-automated production line ensures Sona products have a consistent fit and finish with clean hairline joints. It can also produce them at a price and turnaround time that's tough for our competitors to beat.

Sona

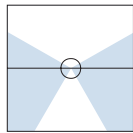
Suspended



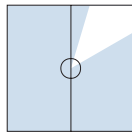
Wall Mount



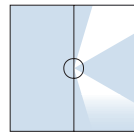
Semi-Indirect



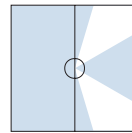
Direct/Indirect



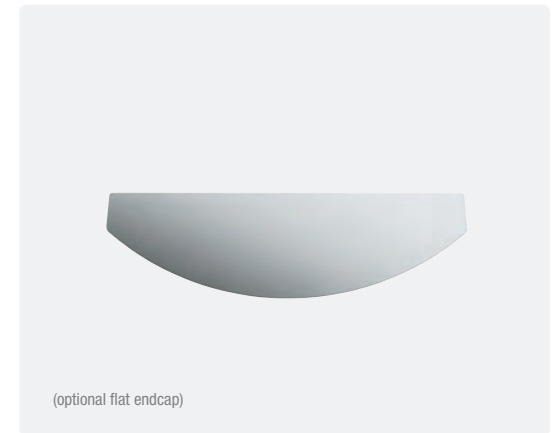
Wall Indirect



Wall Semi-Indirect



Wall Direct/Indirect



Order Guide

Product Series/Type

- 7704** Sona Semi-Indirect (HP*)
- 7705** Sona Semi-Indirect
- 7706** Sona Direct/Indirect
- 7707** Sona Direct/Indirect (HP*)
- 7708** Sona Wall

* High Performance Optics

Lamping

- F01** 1 T5
- F02** 2 T5
- F03** 3 T5
- H01** 1 T5HO
- H02** 2 T5HO
- H03** 3 T5HO
- T01** 1 T8
- T02** 2 T8
- T03** 3 T8

Lower Optics

- W** White Louver
- P** Semi-Specular Louver
- L** Round Perf Housing
- I** Slot Perf Housing
- E** Solid Housing

Upper Optics

- N** None
- D** 60% Down Kit
- G** 80% Down Kit
- J** 100% Down Kit
- Y** 2 Down / 1 Up Kit
- Z** 1 Down / 2 Up Kit

Run Length

Enter total run length in feet (4ft increments)

Available in 4, 8 or 12ft modules. D/I available in 4 or 8ft modules only

Wiring

- 1** 1cct
- 2** 2cct
- 3** 1cct w/ Emergency cct
- 5** 1cct w/ Battery Pack
- 7** 1cct Dimming

Consult website for full list of available wiring options

Voltage

- 1** 120V
- 2** 277V
- 3** 347V

Ballast

- E** Electronic

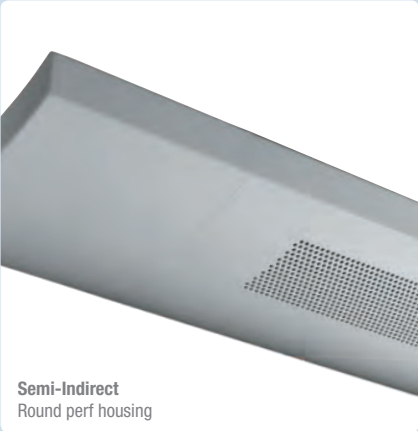
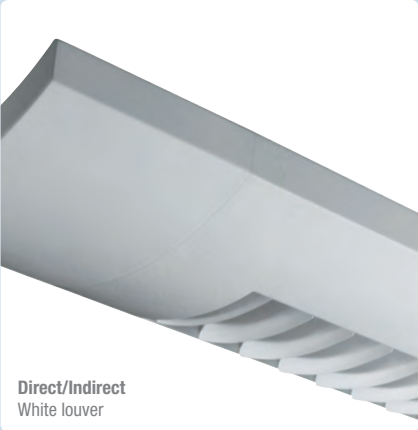
Consult website for full list of supported ballasts

Finish

- W** Standard White
- C** Factory Color
- X** Custom Color

Consult website for full list of available factory colors

Note: For more information about ordering this product with Response Daylight sensors visit www.ledalite.com/response









Philips Ledalite
19750-92A Avenue
Langley, BC, Canada V1M 3B2
Tel: 604.888.6811

ledalite.com

All rights reserved. All other product or service names are the property of their respective owners. Due to continuing product improvements, Philips Ledalite reserves the right to change specifications without notice.
©2011 Philips Group. L0287-02.11



Luminaires use fluorescent lamps that contain small amounts of mercury. Such lamps are labeled "Contains Mercury" and/or with the symbol "Hg." Lamps that contain mercury must be disposed of in accordance with local requirements. Information regarding lamp recycling and disposal can be found at www.lamprecycle.org.