

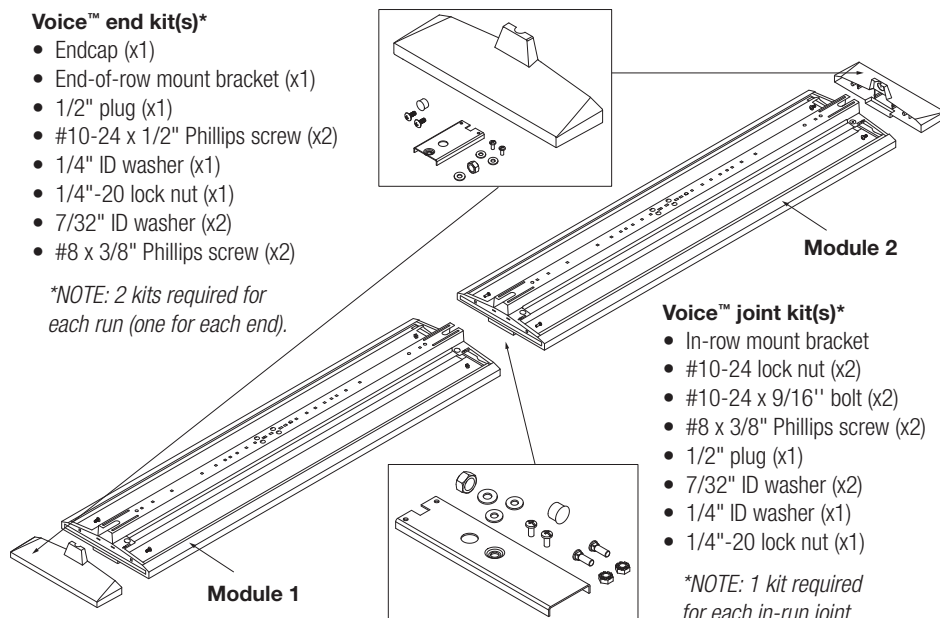
System Overview

These instructions review how to install Voice surface mount fixtures. Voice 4ft and 8ft modules can be installed as individual standalone units, or they can be joined together to create continuous rows. The graphic below shows the components required to install a typical row of Voice surface mount fixtures.

Voice™ end kit(s)*

- Endcap (x1)
- End-of-row mount bracket (x1)
- 1/2" plug (x1)
- #10-24 x 1/2" Phillips screw (x2)
- 1/4" ID washer (x1)
- 1/4"-20 lock nut (x1)
- 7/32" ID washer (x2)
- #8 x 3/8" Phillips screw (x2)

*NOTE: 2 kits required for each run (one for each end).



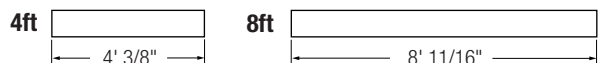
Voice™ joint kit(s)*

- In-row mount bracket
- #10-24 lock nut (x2)
- #10-24 x 9/16" bolt (x2)
- #8 x 3/8" Phillips screw (x2)
- 1/2" plug (x1)
- 7/32" ID washer (x2)
- 1/4" ID washer (x1)
- 1/4"-20 lock nut (x1)

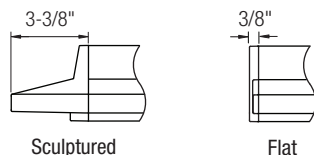
*NOTE: 1 kit required for each in-run joint.

Module Lengths

Voice surface systems come in 4ft and 8ft modules. Overall module lengths are shown right. Module lengths do not include endcaps.



Indicates overall length of fixture (excluding endcaps)



Sculptured

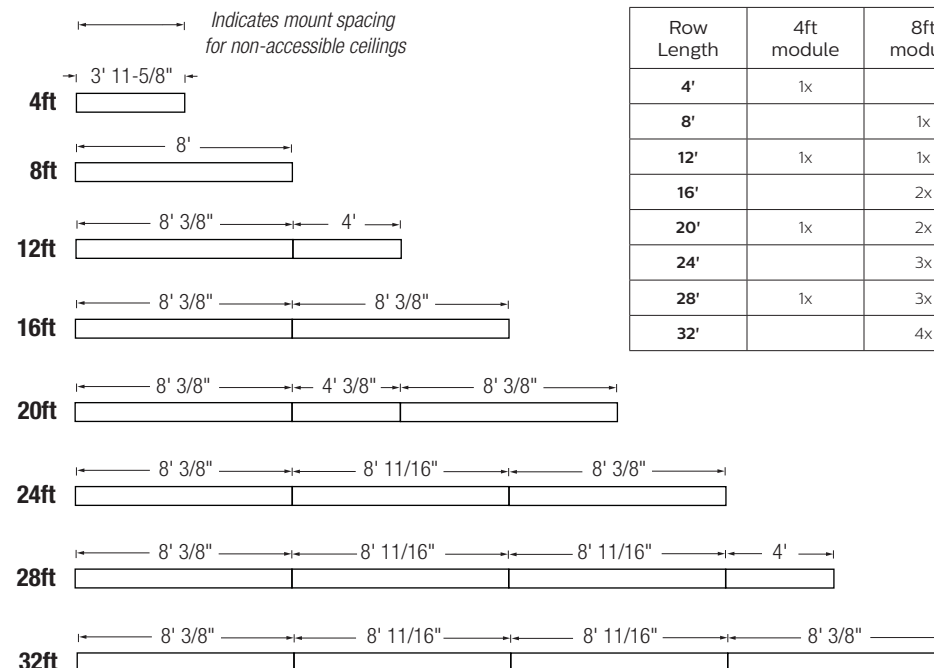
Flat

Endcaps

Add two endcaps to the length of each row. The standard Voice endcap is sculptured. There is also a flat endcap option.

Mount Spacing

For T-bar ceiling installations, mounts will be attached directly to tee-grid. For non-accessible ceilings, the graphic below indicates mount spacing for typical row lengths.



Row Configurations

The table below indicates how 4ft and 8ft modules can be combined to create continuous rows of various lengths.

Row Length	4ft module	8ft module
4'	1x	
8'		1x
12'	1x	1x
16'		2x
20'	1x	2x
24'		3x
28'	1x	3x
32'		4x

! IMPORTANT

Voice door frames are attached to the fixture using plastic straps. The straps are an important safety feature. They also allow hands-free maintenance and re-lamping. DO NOT CUT SAFETY STRAPS OR REMOVE THEM FROM DOOR FRAMES.

To learn how to open and / or remove door frames during installation, please review instructions A and B on Page 4.

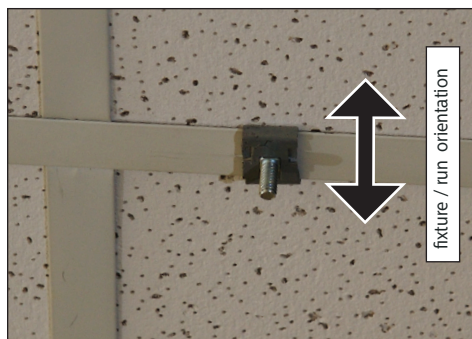
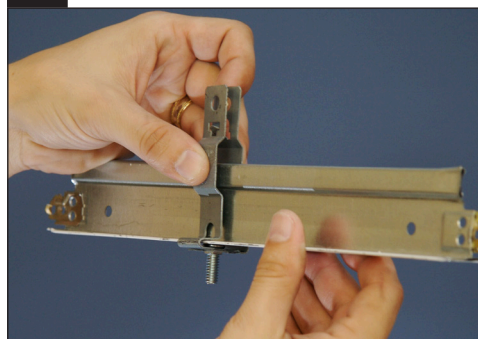
* Non-accessible ceilings

These instructions review installing Voice surface fixtures in both T-bar and non-accessible ceilings. The images in STEPS 1-14 show installation in a T-bar ceiling, but many of the steps also apply to non-accessible ceilings. When the steps for non-accessible ceiling installations differ significantly, more specific instructions are provided on page 5 and / or indicated with a star * throughout the document.



ATTENTION: Install in accordance with national and local building and electrical codes.

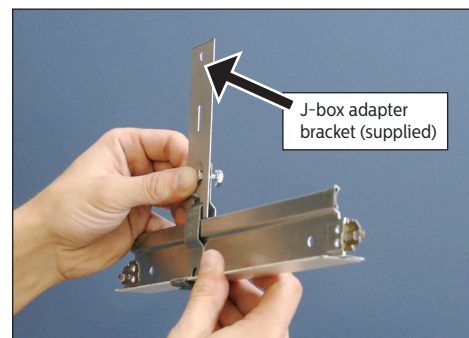
1 T-bar ceilings: install ceiling mounting components (power and non-power locations)



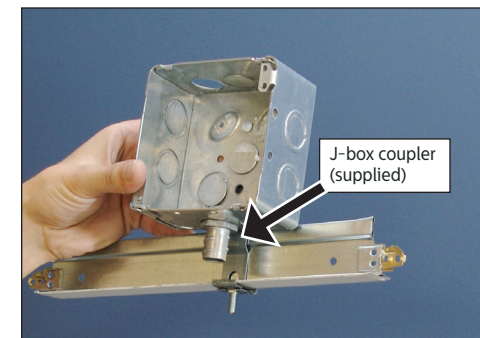
IMPORTANT: Install caddy clips on grid 90° perpendicular to the desired fixture orientation.

Snap caddy clips and 1/4"-20 threaded bolts on T-bar at specified mounting locations (caddy clips and 1/4"-20 threaded bolts supplied with mount kits). Tie-off caddy clips with guy wires (supplied by others) according to code.

*NON-ACCESSIBLE CEILINGS: See PAGE 5 / STEP i



POWER MOUNT LOCATIONS: Attach supplied J-box adapter bracket to caddy clip with nut and bolt. Tie-off adapter bracket with guy wires (supplied by others) according to code.



On 4"x4" J-box (supplied by others), install coupler in center knockout. Attach J-box to caddy clip with nut and bolt.

NOTE: After fixtures have been installed, feed fixture power wires through coupler and complete electrical connections.

2 Unpack / prepare fixtures



Arrange boxed fixtures on floor in specified locations; remove fixtures from boxes; remove plastic from fixtures.

*NON-ACCESSIBLE CEILINGS: See PAGE 5 / STEPS ii and iii

3 Install end-of-row mount brackets



Snap bushing (power locations) or plug (non-power locations) into end-of-row mount bracket (image shows end-of-row bracket with bushing for power location). **POWER LOCATIONS:** Insert wires up through bushing.

*NON-ACCESSIBLE CEILINGS: Snap plug into end-of row mounting bracket.



Slide bracket into end of fixture. Attach bracket to fixture using supplied washers and screws.

NOTE: Screws should be firmly attached but still allow sliding room for adjustment in ceiling.

INSTALLING INDIVIDUAL MODULES: Repeat STEP 3 at other end of fixture and then skip to STEP 5.

4 Install in-row mount brackets



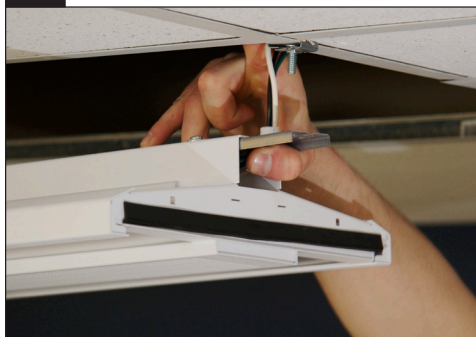
Snap bushing (power locations) or plug (non-power locations) into in-row mount bracket (image shows in-row bracket with plug for non-power location). Slide bracket into joint end of fixture. Attach bracket using supplied hardware.

*NON-ACCESSIBLE CEILINGS: Snap plug into in-row mount bracket.



ATTENTION: Install in accordance with national and local building and electrical codes.

5 Suspend first fixture



With two people, raise the first fixture to ceiling.

*NON-ACCESSIBLE CEILINGS: See PAGE 5 / STEP iv

IMPORTANT: Do not attempt to join fixtures on floor. Instead, hang one fixture at a time and join modules at ceiling level.

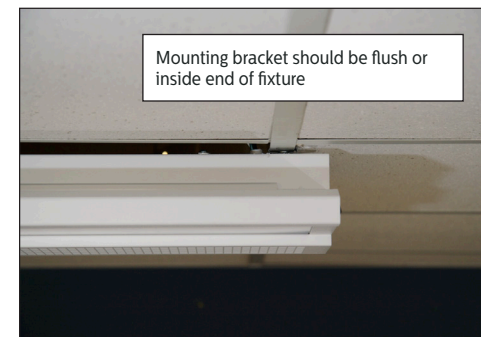
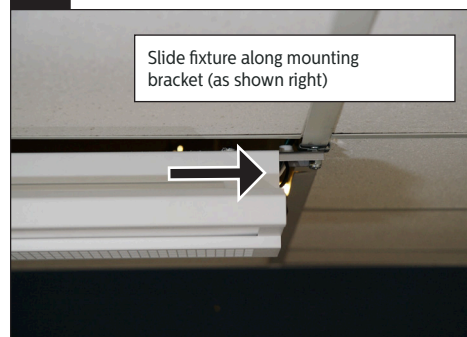
6 Secure end-of-row mounting bracket



At end of fixture, insert 1/4"-20 threaded bolt into end-of-row mount bracket. Secure bracket to caddy clip using 1/4" washer and 1/4"-20" lock nut supplied.

INSTALLING INDIVIDUAL MODULES: Repeat above instruction at other end of fixture and then skip to STEP 13.

7 Slide fixture along mounting bracket



Slide fixture along bracket to provide enough working room to secure bracket at opposite end (see next step).

NOTE: Throughout installation, slide fixture(s) along mount brackets as needed to allow attachment to threaded bolts in ceiling and provide room for adjustments.

8 Secure in-row mounting bracket



At joint end, insert 1/4"-20 threaded bolt into in-row mount bracket. Secure bracket to caddy clip using 1/4" washer and 1/4"-20 lock nut (supplied).

9 Suspend and join additional fixtures to create row



With two people, raise second fixture to ceiling. At joint, slide fixture onto in-row mount bracket (as shown). At opposite end, secure fixture to threaded bolt using 1/4" washer and 1/4"-20 lock nut (supplied).

10 Complete electrical connections at joints



Complete electrical connections using supplied quick-wire connectors. Tuck wires into cavity.

Repeat STEPS 9 and 10 for each additional fixture in row.

11 Secure joint(s) together



Slide modules together; secure joint from below using supplied nut and bolt hardware (requires 3/8" nut driver).

IMPORTANT: Ledalite recommends tightening fasteners by hand. When joining modules, ensure nut is tightened snug plus an additional 1/4 turn.

NOTE: Door frames must be open to complete this step. Do not cut safety straps on door frame. See instruction A on page 4 for details.



ATTENTION: Install in accordance with national and local building and electrical codes.

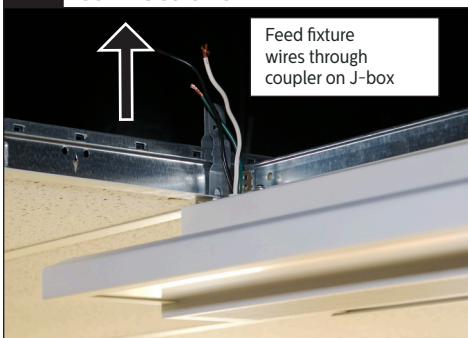
12 Install endcaps



Attach endcap to first and last module on each row using supplied hardware.

TOOLS: Sculptured endcap requires Phillips screwdriver; flat endcap requires 3/8" nut driver.

13 Complete electrical connections



Feed fixture wires up through coupler into J-box. Complete electrical connections.

*NON-ACCESSIBLE CEILINGS: See page 5 / STEP v

14 Finishing

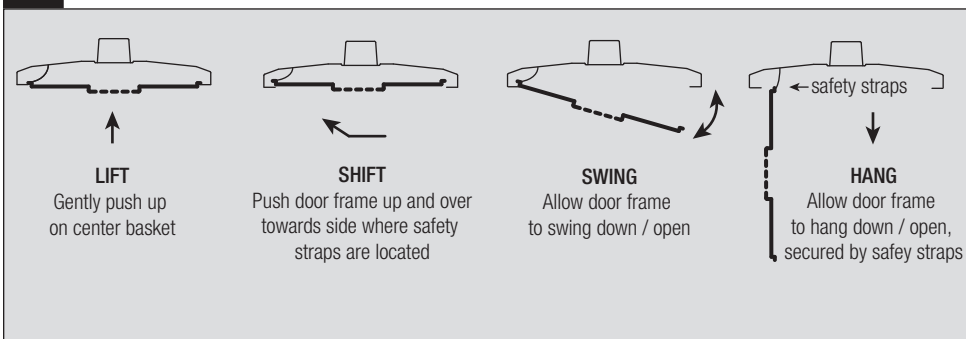
Lamp fixtures

Close door frames: Swing door frame up and insert side where safety straps are located, then close door completely and insert on other side, ensuring a secure fit.

Secure all components: Tighten screws at all end-of-row and in-row mount brackets and endcaps.

*NON-ACCESSIBLE CEILINGS: See page 5 / STEP vi

A T-BAR CEILINGS: How to open door frames



Voice door frames are attached to the fixture using plastic straps located at each end of the ballast channel. The straps are an important safety feature. They also allow hands-free maintenance and re-lamping.

TO OPEN DOOR FRAMES: Follow the steps in the graphic above.

B NON-ACCESSIBLE CEILINGS: How to remove door frames



Voice door frames are attached to the fixture using two plastic straps located at each end of the ballast channel.

TO OPEN DOOR FRAMES: Push door frame towards side where safety straps are located and lift other side up.



DO NOT CUT PLASTIC SAFETY STRAPS.

To release the door frame from fixture housing, slide straps out of notches located at each end of the ballast channel.

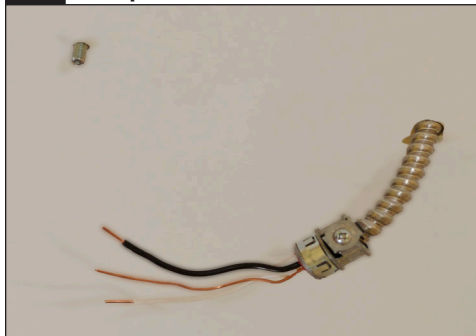
IMPORTANT: Re-attach all safety straps when re-installing door frames at end of installation.



ATTENTION: Install in accordance with national and local building and electrical codes.

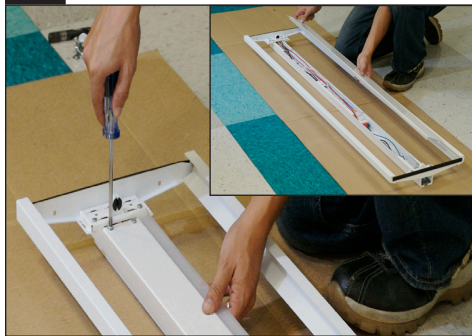
Additional Instructions for Non-accessible Ceilings NOTE: Use in conjunction with STEPS 2–14

i Install ceiling mounting components



In ceiling, install 1/4"-20 threaded bolts (supplied) at required mounting locations.

ii Prepare fixtures



Arrange boxed fixtures on floor in specified locations; remove fixtures from boxes; remove plastic from fixtures. Remove door frame from fixtures (see instruction B on PAGE 4). Remove ballast-cover assembly (6 screws).

iii Determine location of power supply to fixture



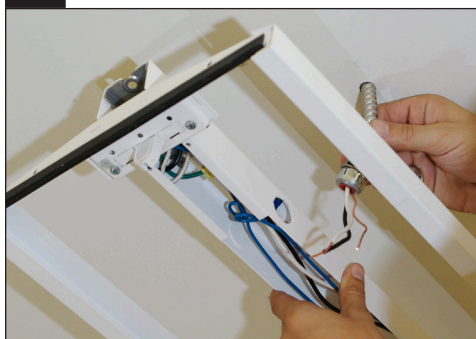
Power can be supplied to fixtures from side (shown above), end (shown right), or top (not shown). **POWER TO SIDE OF FIXTURE:** There are 7/8" knockouts located along side of ballast channel at each end. Punch out knockout as required. **POWER TO TOP OF FIXTURE:** Drill wire access hole on top of ballast channel as required.



POWER TO END OF FIXTURE: There is a drill location template located on inside of endcap. Drill 7/8" electrical knockout.

NEXT: FOLLOW STEPS 3-4

iv Suspend first fixture



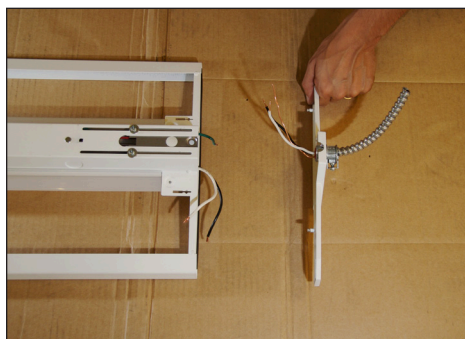
With two people, lift fixture to ceiling and insert 1/4"-20 threaded bolt into end-of-row bracket. **SIDE POWER SUPPLY:** Support fixture below mounting feed. Feed wires through 7/8" knockout and secure connector to fixture housing.

NEXT: FOLLOW STEPS 6-12

v Complete electrical connections



SIDE POWER SUPPLY: Complete electrical connections using wire nuts (supplied by others). Tuck wires into wire access cavity.



END POWER SUPPLY: Working at ceiling level, support fixture below mounting feed and feed wires through 7/8" knockout in endcap. Secure connector to fixture housing. Complete electrical connections. Tuck wires into wire access cavity.

vi Finishing

Lamp fixtures

Secure components: Tighten screws at all ends and joints.

Re-install ballast-cover assembly: 6 screws.

Re-install plastic safety straps and door frames: Insert plastic safety straps in notches and slide to secure fit on both sides of fixture, allowing the door frame to hang down.

Swing door frame up and insert side where safety straps are located, then close door completely and insert on other side, ensuring a secure fit.



ATTENTION: Install in accordance with national and local building and electrical codes.